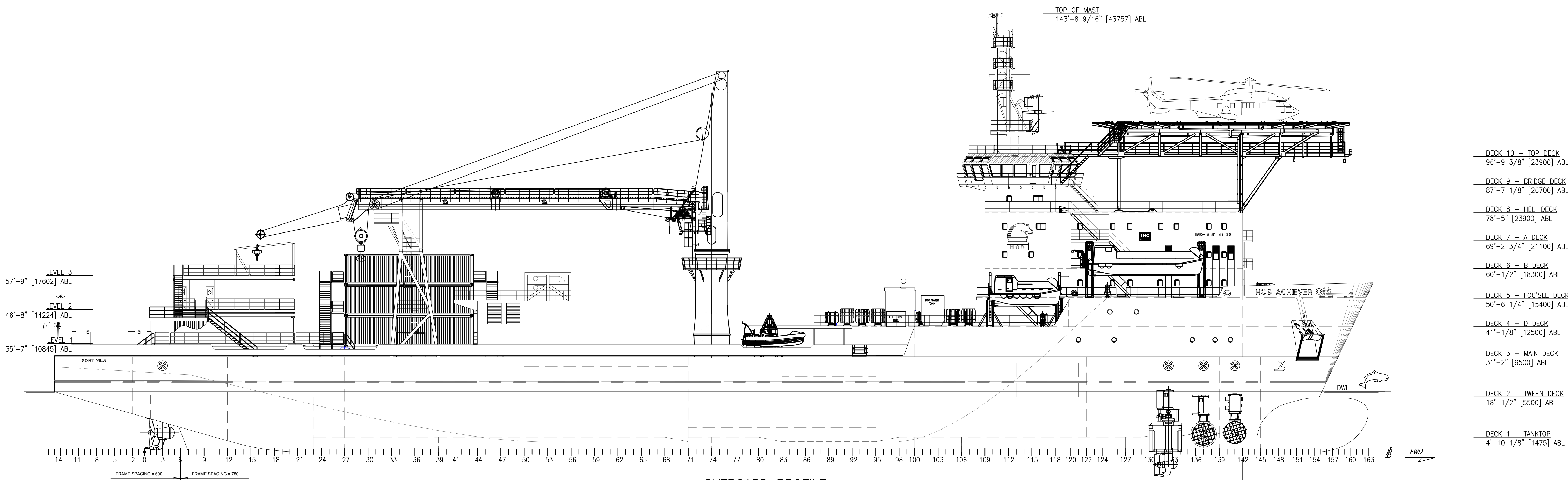


PRINCIPAL PARTICULARS

LOA 432'-1"
 LBP 386'-2"
 BEAM 72'-1"
 DEPTH 31'-2"
 LOADLINE DRAFT 22'-2"
 GENERATORS (4) X 2,875 KW
 AUX GENERATORS (2) X 1,800 KW
 TOTAL KILLOWATTS 15,100 KW
 MAIN PROPULSION (2) X 4,025 HP FFP STEERABLE AZIMUTH
 BOW THRUSTERS (2) X 1,800 HP CPP TUNNEL,
 (1) X 1,600 HP CPP DROP DOWN AZIMUTH
 REGULATORY: OCEANS, SOLAS, ABS A1, AMS, ACCU,
 DPS-3, HELDK

TANK CAPACITIES

WATER BALLAST 859,250 US GAL
 SHIP'S FUEL OIL 318,910 US GAL
 POTABLE WATER 145,440 US GAL
 SEWAGE 21,254 US GAL



OUTBOARD PROFILE
 STARBOARD

- DECK 10 - TOP DECK
96'-9 3/8" [23900] ABL
- DECK 9 - BRIDGE DECK
87'-7 1/8" [26700] ABL
- DECK 8 - HULL DECK
78'-5" [23900] ABL
- DECK 7 - A DECK
69'-2 3/4" [21100] ABL
- DECK 6 - B DECK
60'-1/2" [18300] ABL
- DECK 5 - FOC'SLE DECK
50'-6 1/4" [15400] ABL
- DECK 4 - D DECK
41'-1/8" [12500] ABL
- DECK 3 - MAIN DECK
31'-2" [9500] ABL
- DECK 2 - TWEEN DECK
18'-1/2" [5500] ABL
- DECK 1 - TANKTOP
4'-10 1/8" [1475] ABL

HOS 430 MPSV / HOS ACHIEVER

THIS DRAWING, DESIGN CONCEPT AND SPECIFICATIONS ARE THE PROPERTY OF HORNBECK OFFSHORE SERVICES AND ARE FURNISHED ON A CONFIDENTIAL BASIS WITH AN EXPRESSED UNDERSTANDING THAT THEY WILL NOT BE COPIED IN ANY MANNER USED FOR MANUFACTURE, SOLD, TRANSFERRED, NOR USED TO THE DETRIMENT OF SAID FIRM WITHOUT WRITTEN PERMISSION. HOS ©
HORNBECK OFFSHORE SERVICES

DRAWN BY: J. DENNIS	432'-1" X 72'-1" X 31'-2"			SIZE D
CHECKED BY:	OUTBOARD PROFILE & GENERAL ARRANGMENT			REV. 16
APPROVED BY:	TASK No. 7981	DRAWING No. 1,001	SCALE: 1/16"=1'-0" DATE: 12/15/23	REV. 16
HULL No. 714 SY: IHC SHEET 1 OF 5 LAST SAVE/PLT: 2/23/2024 3:06 PM ENG: DATIENZA SHEET: ANSI D 22X34				

16

15

14

13

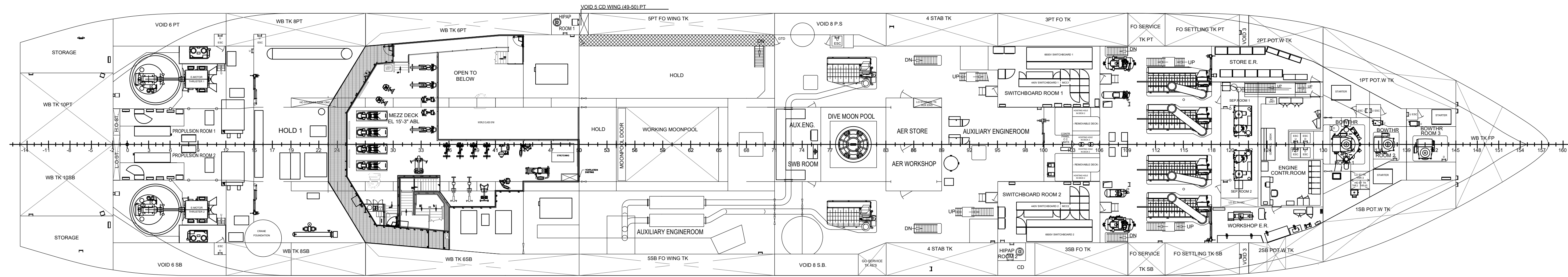
12

11

10

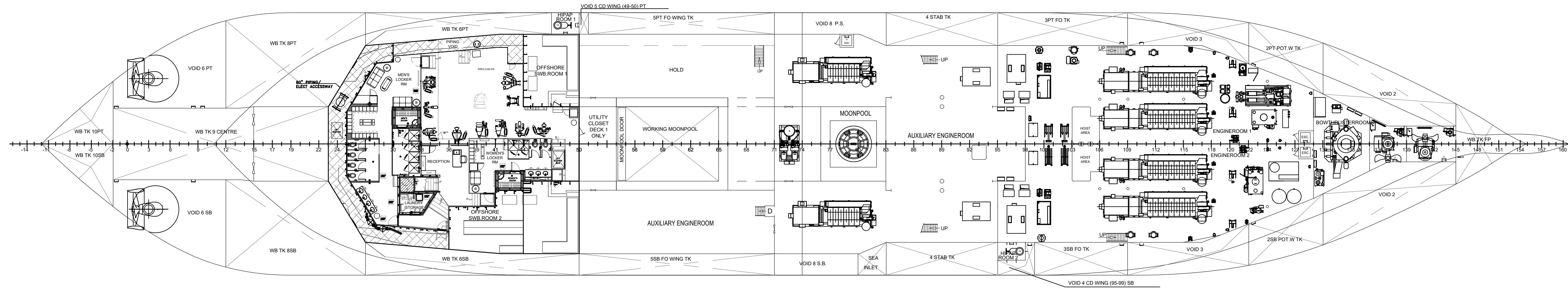
9

D



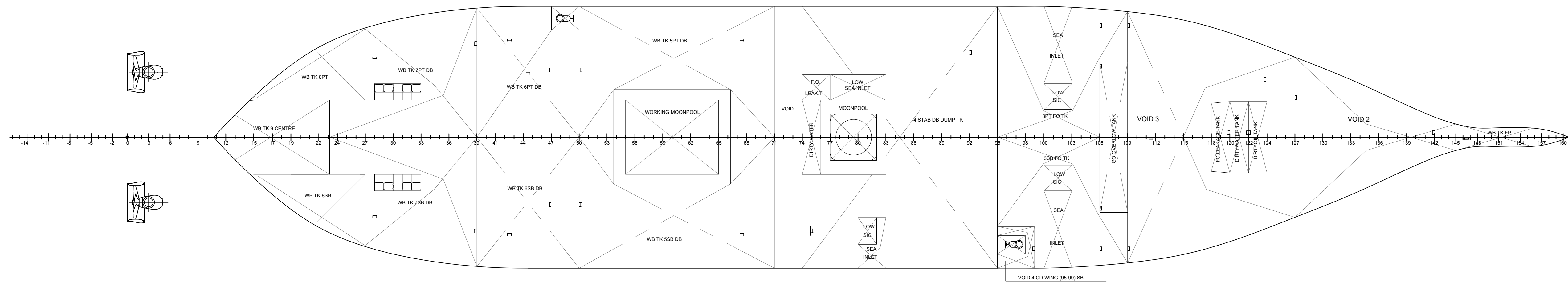
DECK 2 - TWEENDECK

C



DECK 1 - TANK TOP

B



DOUBLE BOTTOM TANK

16

15

14

13

12

11

10

9

A

A

<p>HORNBECK OFFSHORE SERVICES</p>	<p>THIS DRAWING, DESIGN CONCEPT AND SPECIFICATIONS ARE THE PROPERTY OF HORNBECK OFFSHORE SERVICES AND ARE FURNISHED ON A CONFIDENTIAL BASIS WITH AN EXPRESSED UNDERSTANDING THAT THEY WILL NOT BE COPIED IN ANY MANNER USED FOR MANUFACTURING, SOLD, TRANSFERRED, NOR USED TO THE DETRIMENT OF SAID FIRM WITHOUT WRITTEN PERMISSION.</p>		<p>OUTBOARD PROFILE & GENERAL ARRANGMENT</p>	<p>SIZE D</p>
	<p>TASK No. 7981</p>	<p>DRAWING No. 1,001</p>	<p>SCALE: 1/16"=1'-0"</p>	<p>REV. 7</p>
	<p>HULL No. 714</p>	<p>SY: IHC</p>	<p>DATE: 12/15/23</p>	<p>SHEET 2 OF 5</p>

24

23

22

21

20

19

18

17

D

D

C

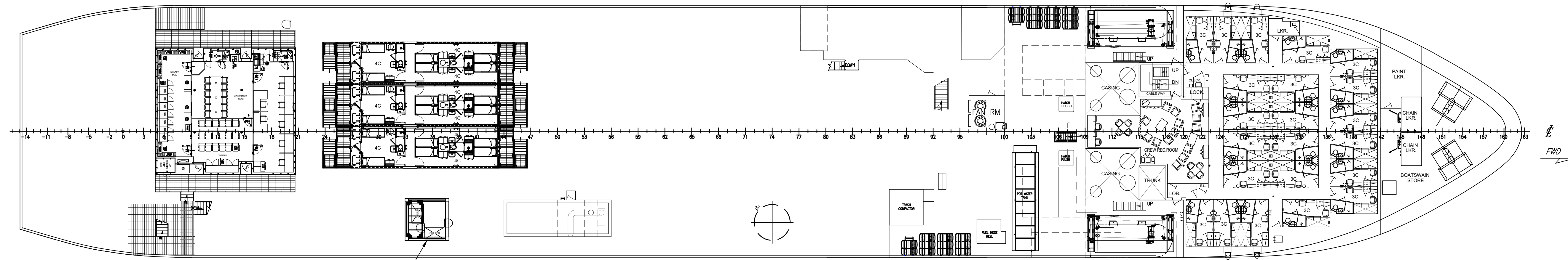
C

B

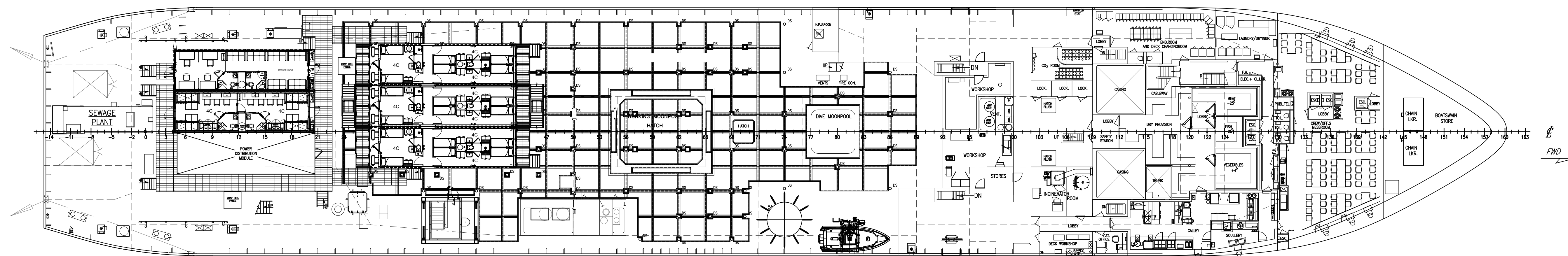
B

A

A



DECK 4 – D DECK
LEVEL 2 MODULE ARRANGMENT



DECK 3 – MAIN DECK
LEVEL 1 MODULE ARRANGMENT

24

23

22


21

20

19

18

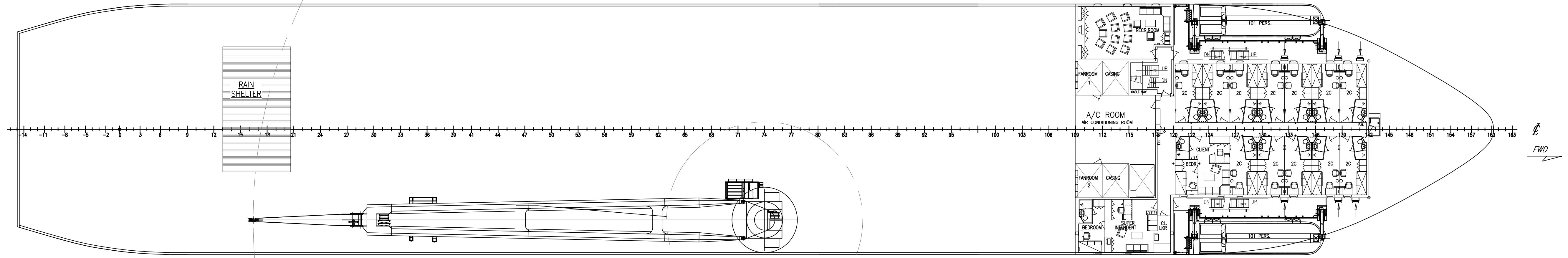
17

 <p>THIS DRAWING, DESIGN CONCEPT AND SPECIFICATIONS ARE THE PROPERTY OF HORNBECK OFFSHORE SERVICES AND ARE FURNISHED ON A CONFIDENTIAL BASIS WITH AN EXPRESSED UNDERSTANDING THAT THEY WILL NOT BE COPIED IN ANY MANNER USED FOR MANUFACTURE, SALE, TRANSFERRED, NOR USED TO THE DETRIMENT OF SAID FIRM WITHOUT WRITTEN PERMISSION.</p> <p>HORNBECK OFFSHORE SERVICES</p>	OUTBOARD PROFILE & GENERAL ARRANGMENT			SIZE D
	TASK No. 7981	DRAWING No. 1,001	SCALE: 1/16"=1'-0"	REV.
	HULL No. 714	SY: IHC	DATE: 12/15/23	16
			SHEET 3 OF 5	

32 31 30 29 28 27 26 25

D

D



AUX HOIST
20mt SWL
147'-4" (44.9m)

AUX HOIST
20mt SWL
R28'3" (8.6m)

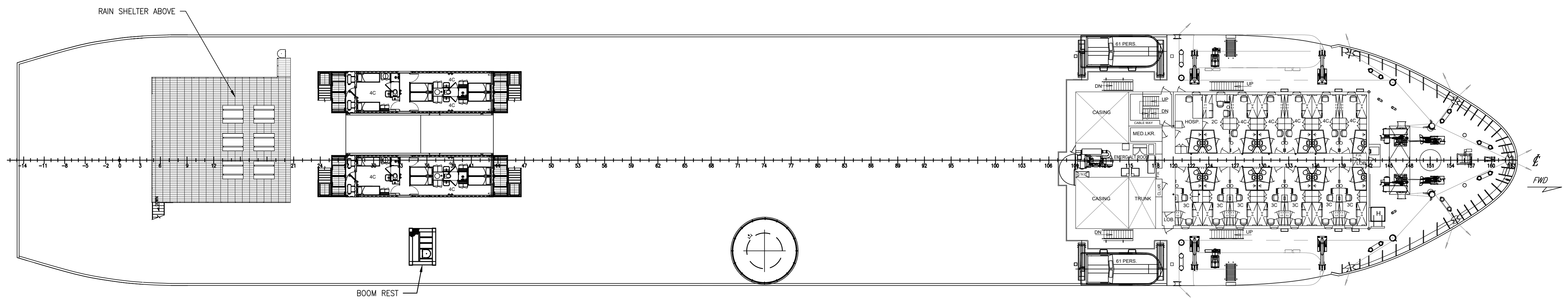
DECK 6 - B DECK
LEVEL 4 MODULE ARRANGEMENT

C

C

B

B



RAIN SHELTER ABOVE


BOOM REST

DECK 5 - FOC SLE DECK
LEVEL 3 MODULE ARRANGEMENT

A

A

32 31 30 29 28 27 26 25

 <p>THIS DRAWING, DESIGN CONCEPT AND SPECIFICATIONS ARE THE PROPERTY OF HORNBECK OFFSHORE SERVICES AND ARE FURNISHED ON A CONFIDENTIAL BASIS WITH AN EXPRESSED UNDERSTANDING THAT THEY WILL NOT BE COPIED IN ANY MANNER USED FOR MANUFACTURE, SALE, TRANSFERRED, NOR USED TO THE DETRIMENT OF SAID FIRM WITHOUT WRITTEN PERMISSION. HOS</p> <p>HORNBECK OFFSHORE SERVICES</p>	OUTBOARD PROFILE & GENERAL ARRANGMENT			SIZE D
	TASK No. 7981	DRAWING No. 1,001	SCALE: 1/16"=1'-0"	REV.
	HULL No. 714	SY: IHC	DATE: 12/15/23	16
	SHEET 4 OF 5			

40

39

38

37

36

35

34

33

D

D

C

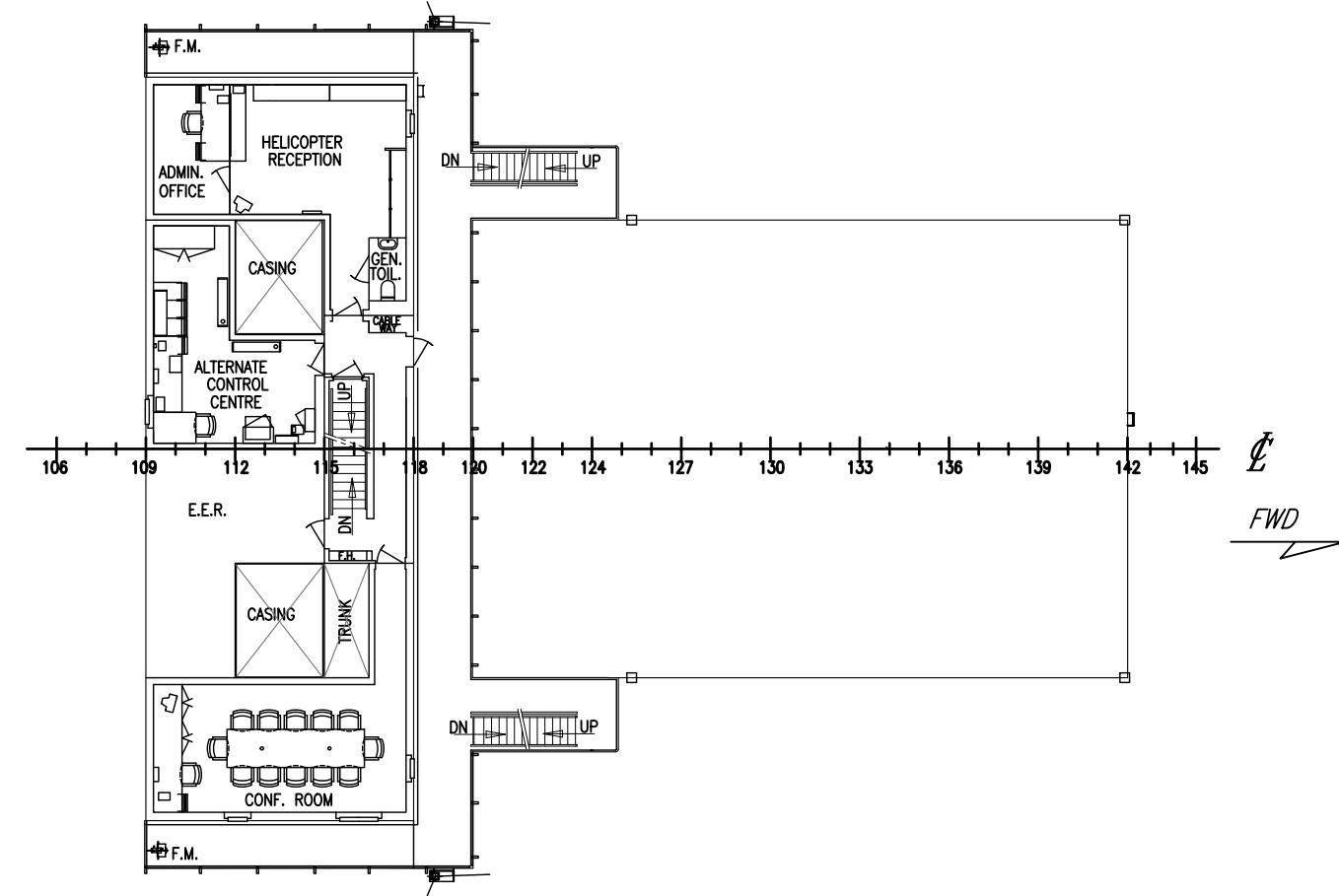
C

B

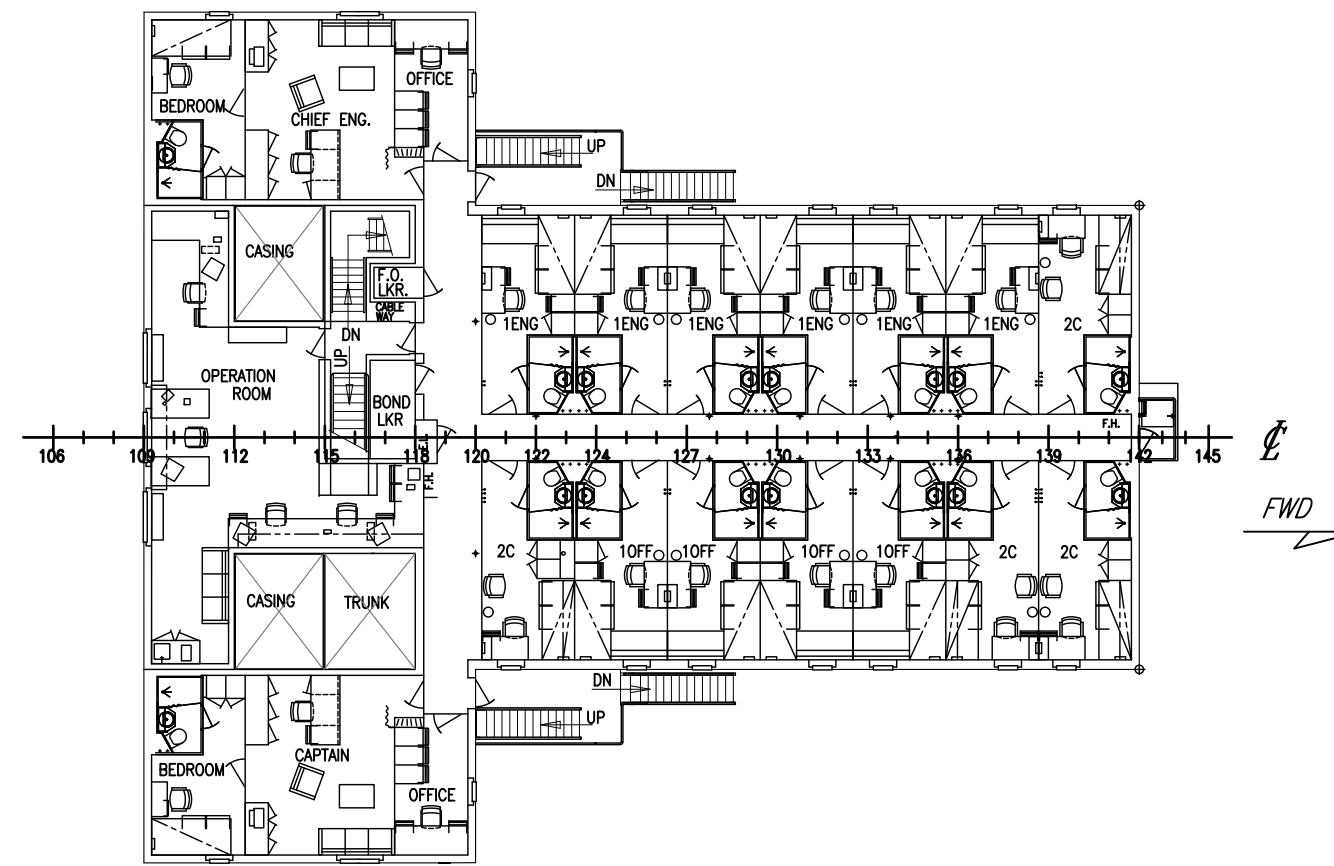
B

A

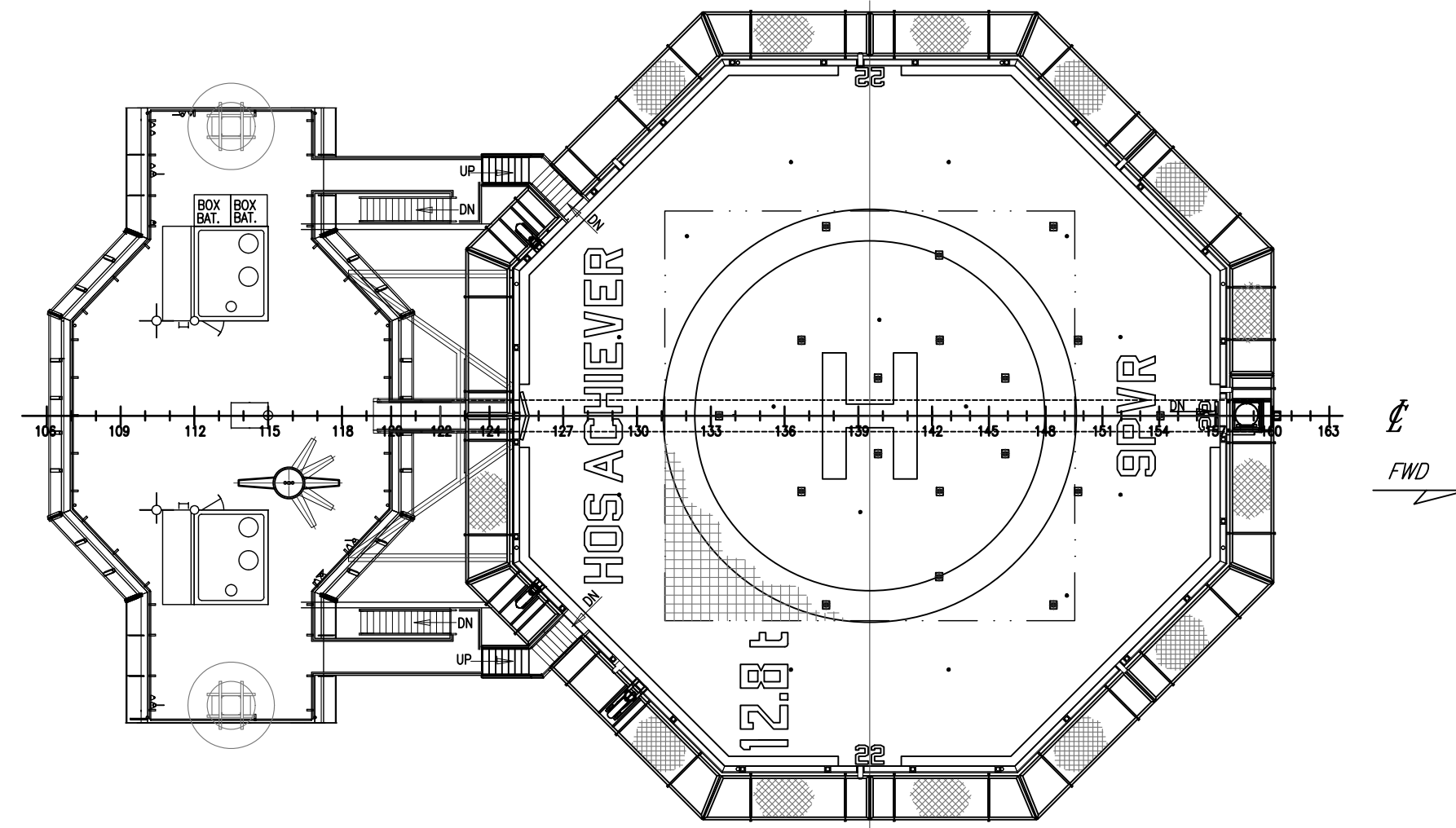
A



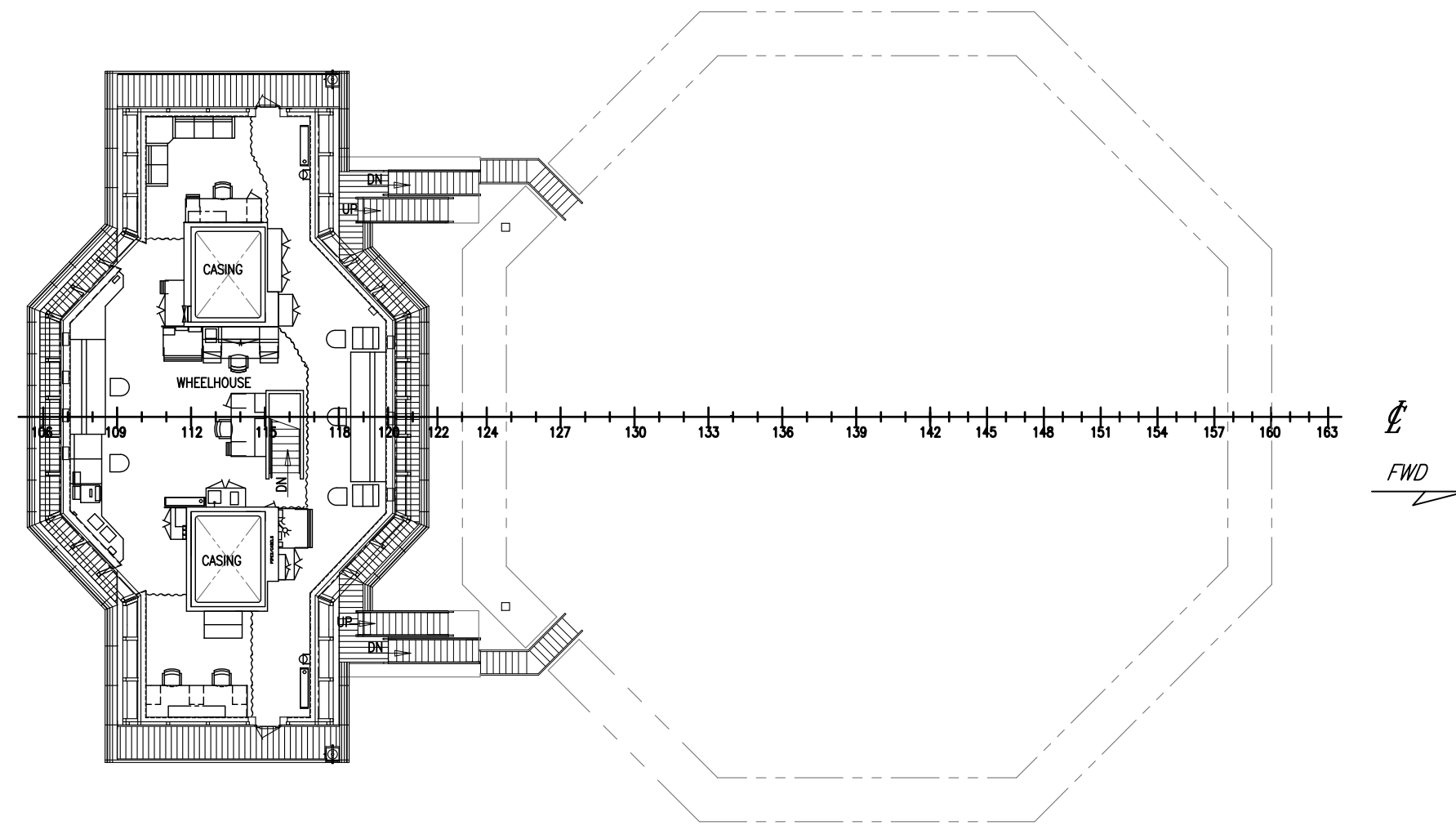
DECK 8 - HELI-DECK




DECK 7 - A DECK



DECK 10 - TOP DECK



DECK 9 - BRIDGE DECK

 <p>HORNBECK OFFSHORE SERVICES</p>	<p>THIS DRAWING, DESIGN CONCEPT AND SPECIFICATIONS ARE THE PROPERTY OF HORNBECK OFFSHORE SERVICES AND ARE FURNISHED ON A CONFIDENTIAL BASIS WITH AN EXPRESSED UNDERSTANDING THAT THEY WILL NOT BE COPIED IN ANY MANNER USED FOR MANUFACTURE, SALE, TRANSFER, NOR USED TO THE DETRIMENT OF SAID FIRM WITHOUT WRITTEN PERMISSION. HOS ©</p>			<p>OUTBOARD PROFILE & GENERAL ARRANGMENT</p>	<p>SIZE D</p>
	<p>TASK No. 7981</p>	<p>DRAWING No. 1.001</p>	<p>SCALE: 1/16"=1'-0"</p>	<p>DATE: 12/15/23</p>	<p>REV. 16</p>
	<p>HULL No. 714</p>	<p>SY: IHC</p>	<p>SHEET 5 OF 5</p>		

40

39

38

37

36

35

34

33