

PRINCIPAL PARTICULARS

LOA	292'-0"
LBP - LWL	280'-0"
BEAM	64'-0"
DEPTH	24'-6"
LOADLINE DRAFT	19'-11"
DEADWEIGHT	5,407 LT
GENERATORS	(4) X 1825KW @ 1,800 RPM (WATER-COOLED), (2) X 200KW (AIR COOLED)
TOTAL KILOWATTS	7,300 KW @ 690 VAC
MAIN PROPULSION	(2) X 2,500KW @ 620 VAC @ 1,000 RPM (6,704HP TOTAL) FIXED PITCH VFD Z-DRIVE IN NOZZLES
BOW THRUSTERS	(2) X 1,180 KW @ 620 VAC @ 1,200 RPM (3,164HP TOTAL) FIXED PITCH VFD/REVERSING MOTORS
FIRE MONITORS	(2) X 5284 GPM/ (495KW @ 690 VAC) 665HP/394' REACH - REMOTE CONTROLLED FIRE MONITORS
REGULATORY	USCG SUB I & L /SOLAS/ABS ✕ A1, OFFSHORE SERVICE VESSEL, ✕ AMS, DPS-2, ENVIRO, GP ✕ ACCU, UWILD, Fifi 1, ✕ (E), OSR-C2, CRC

TANK CAPACITIES

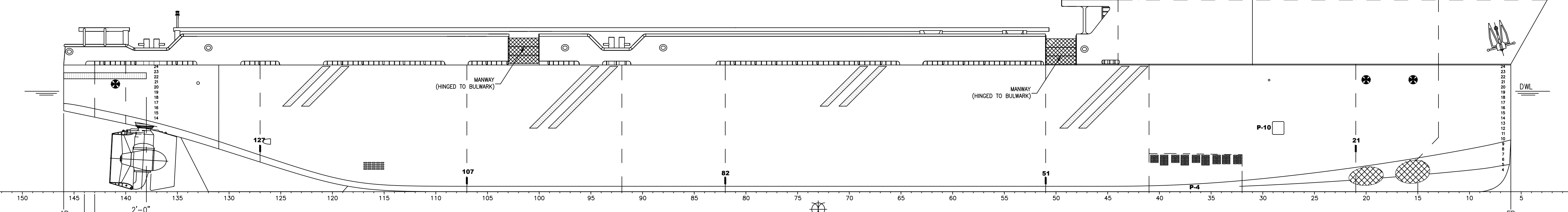
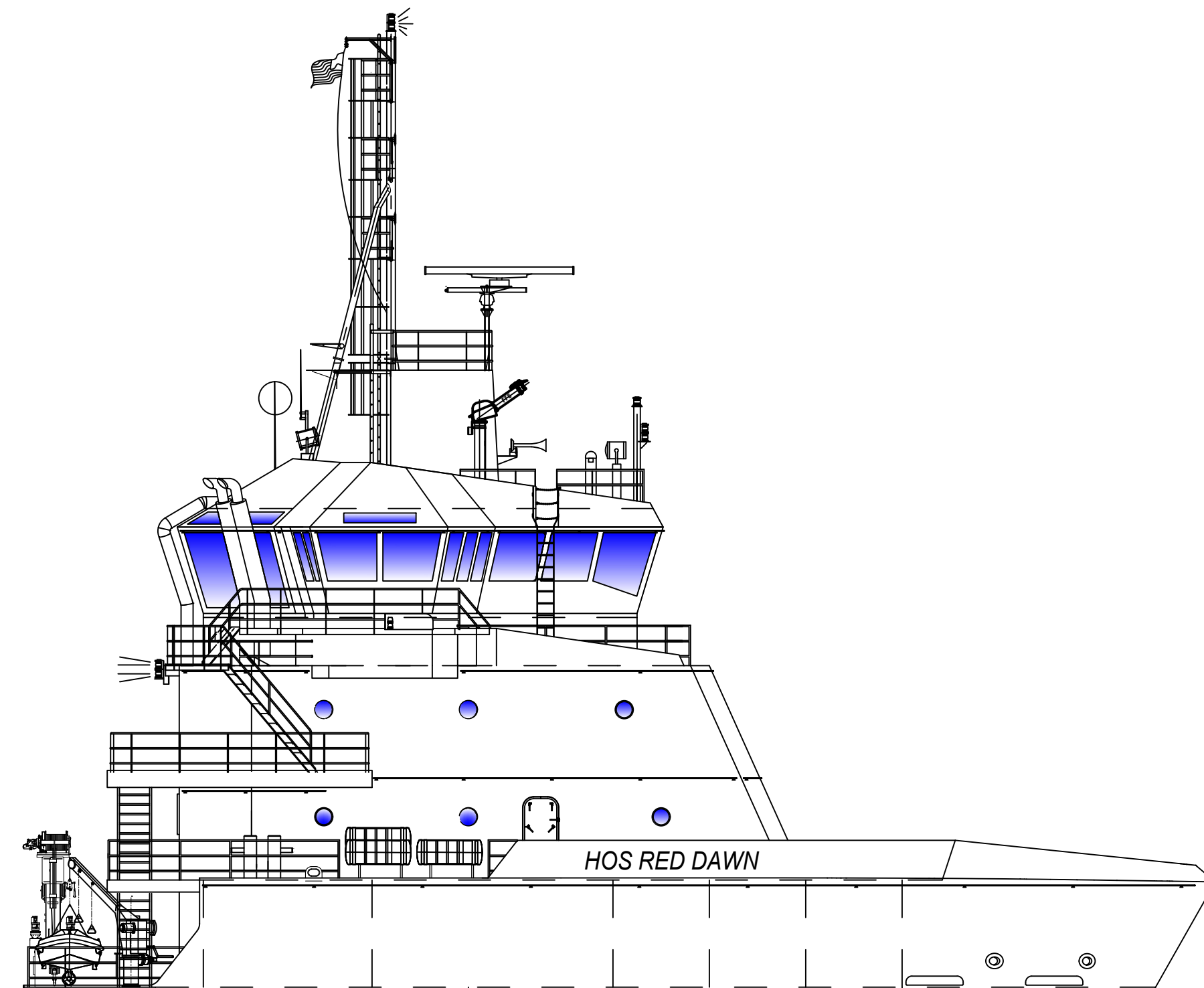
WATER BALLAST	553,278 US GAL (98% FILL)
TOTAL FUEL OIL	236,318 US GAL (98% FILL)
SHIP'S FUEL OIL	20,554 US GAL (98% FILL)
POTABLE WATER	56,344 US GAL (98% FILL)
LIQUID MUD*	20,429 BARRELS (98% FILL)
METHANOL	1,573 BARRELS (98% FILL)
DRY BULK (SG = 2.4)	14,347 CU. FT.
SEWAGE	21,254 US GAL (98% FILL)
GREY WATER	21,254 US GAL (98% FILL)

*WHEN METHANOL IS CARRIED, LIQUID MUD CAPACITY IS 18,856 BBL (98% FILL)

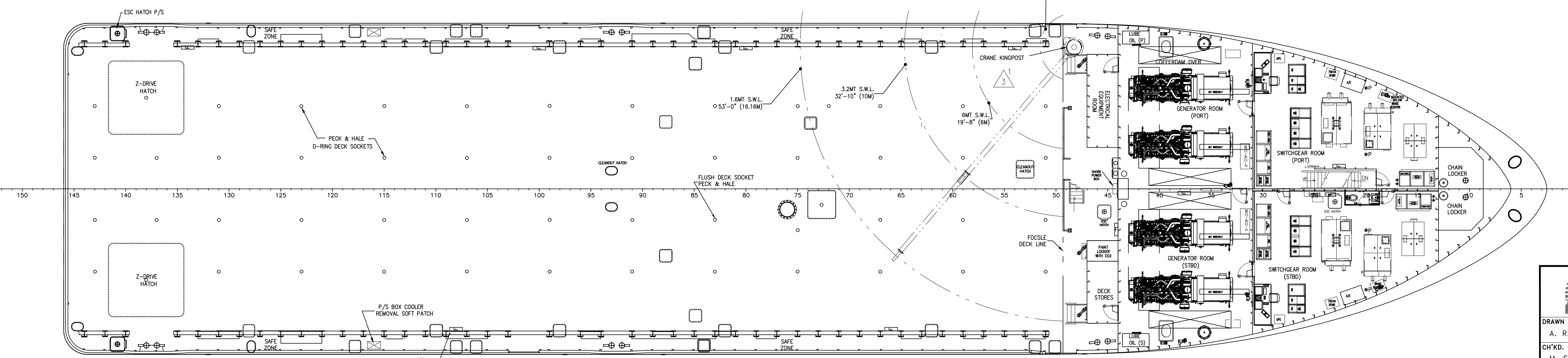
ACCOMMODATIONS SUMMARY TABLE

ACCOMMODATIONS	50
STATEROOMS	17
HEADS	17
LOUNGE	1
LAUNDRY AREA	1
GALLEY	1
MESS AREA	1
SICK BAY	1

REVISIONS				
REV	ZONE	DESCRIPTION	DATE	BY
2		CHANGED DECK LOCKER TO MAIN DECK ELECTRICAL EQUIPMENT ROOM	07/10/15	EJ
3	1-4A	1. ADDED FOCSLE DECK CRANE BACKGROUND VISUAL AND CRANE SWEEP INFORMATION AT MAIN DECK VIEW.	11/20/17	SMM
	2-15B	2. MADE MINOR LAYOUT ADJUSTMENTS TO FOCSLE DECK CRANE LAYOUT.		
	SHT 2	3. REARRANGED VIEWS FOR PROPER DRAWING FLOW.		



OUTBOARD PROFILE



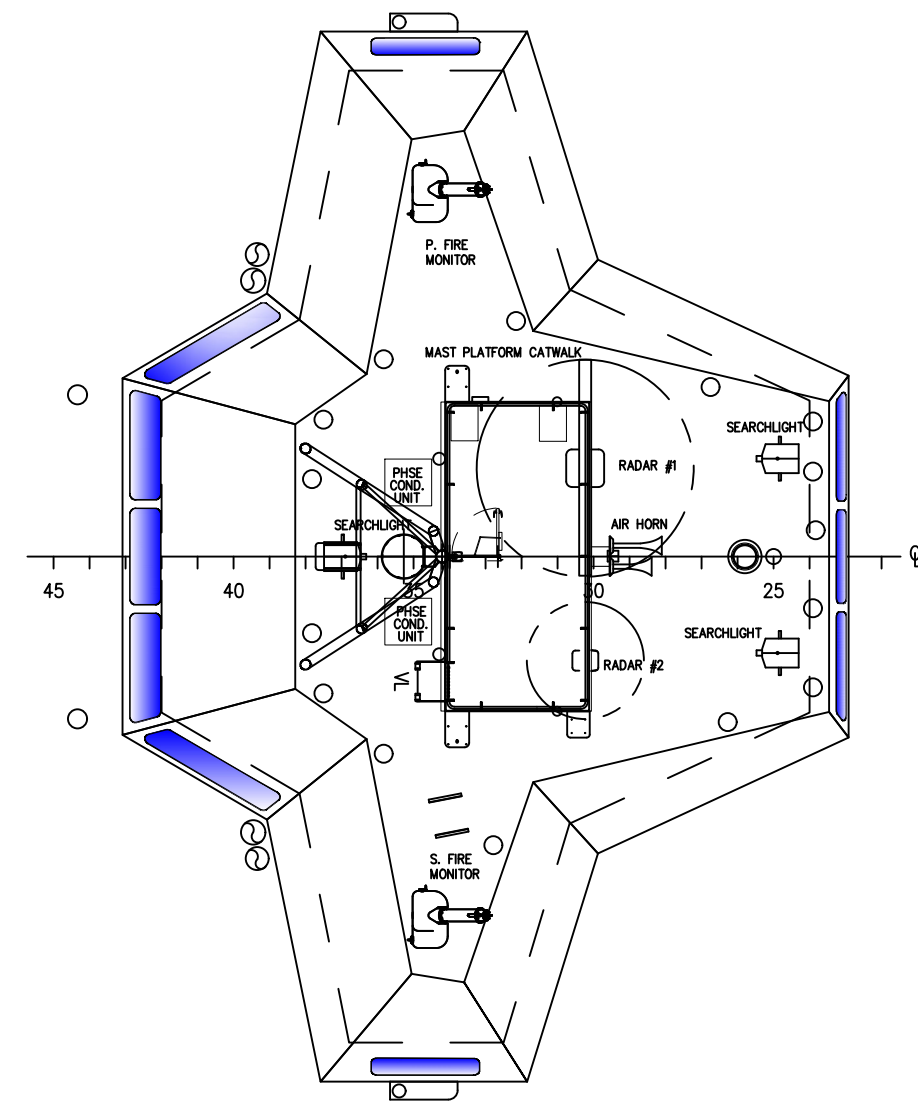
MAIN DECK

HOS RED DAWN

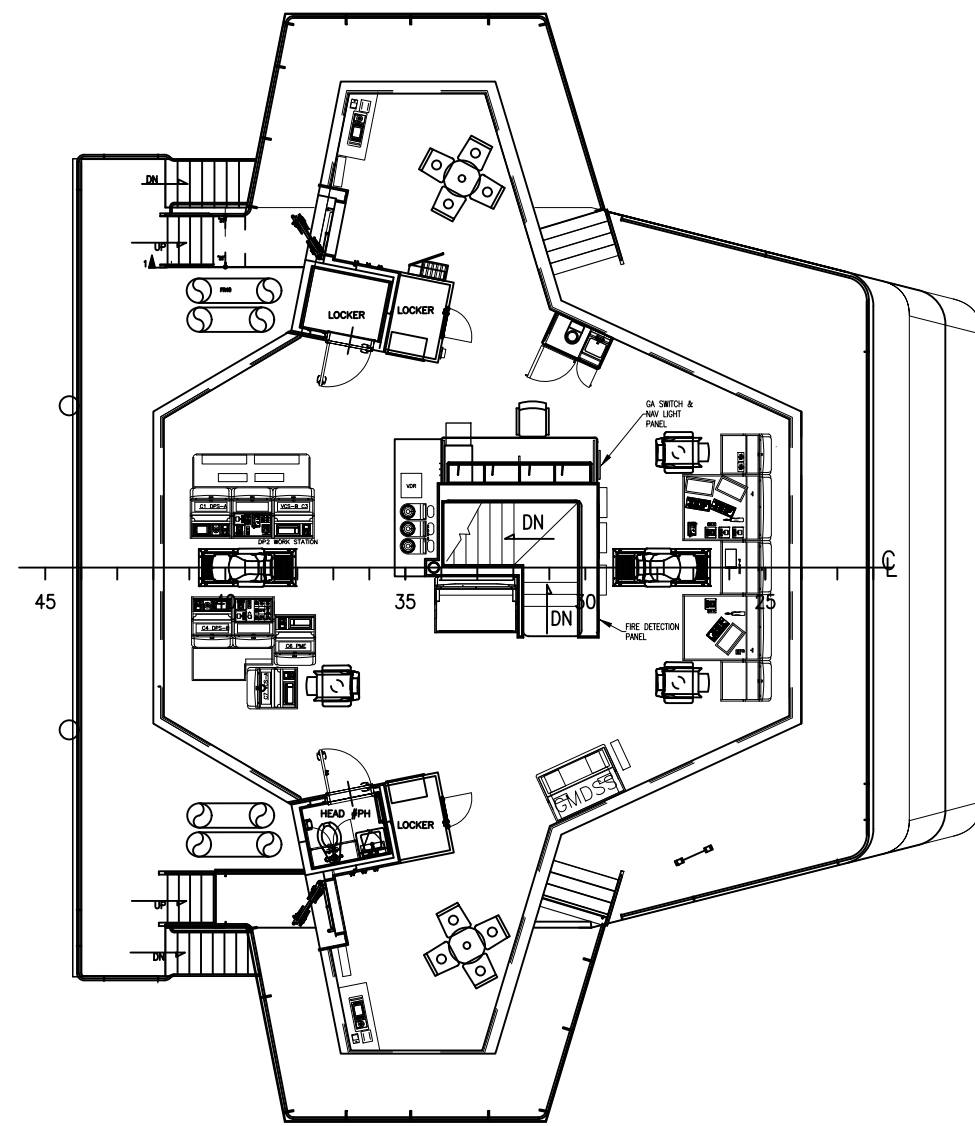
THIS DRAWING, DESIGN CONCEPT AND SPECIFICATIONS ARE THE PROPERTY OF HORNBECK OFFSHORE SERVICES AND ARE FURNISHED ON A CONFIDENTIAL BASIS WITH AN EXPRESSED UNDERSTANDING THAT THEY WILL NOT BE COPIED, IN ANY MANNER USED FOR MANUFACTURE, SOLD, TRANSFERRED, NOR USED TO THE DETRIMENT OF SAID FIRM WITHOUT WRITTEN PERMISSION. HOS ©

HORNBECK OFFSHORE SERVICES

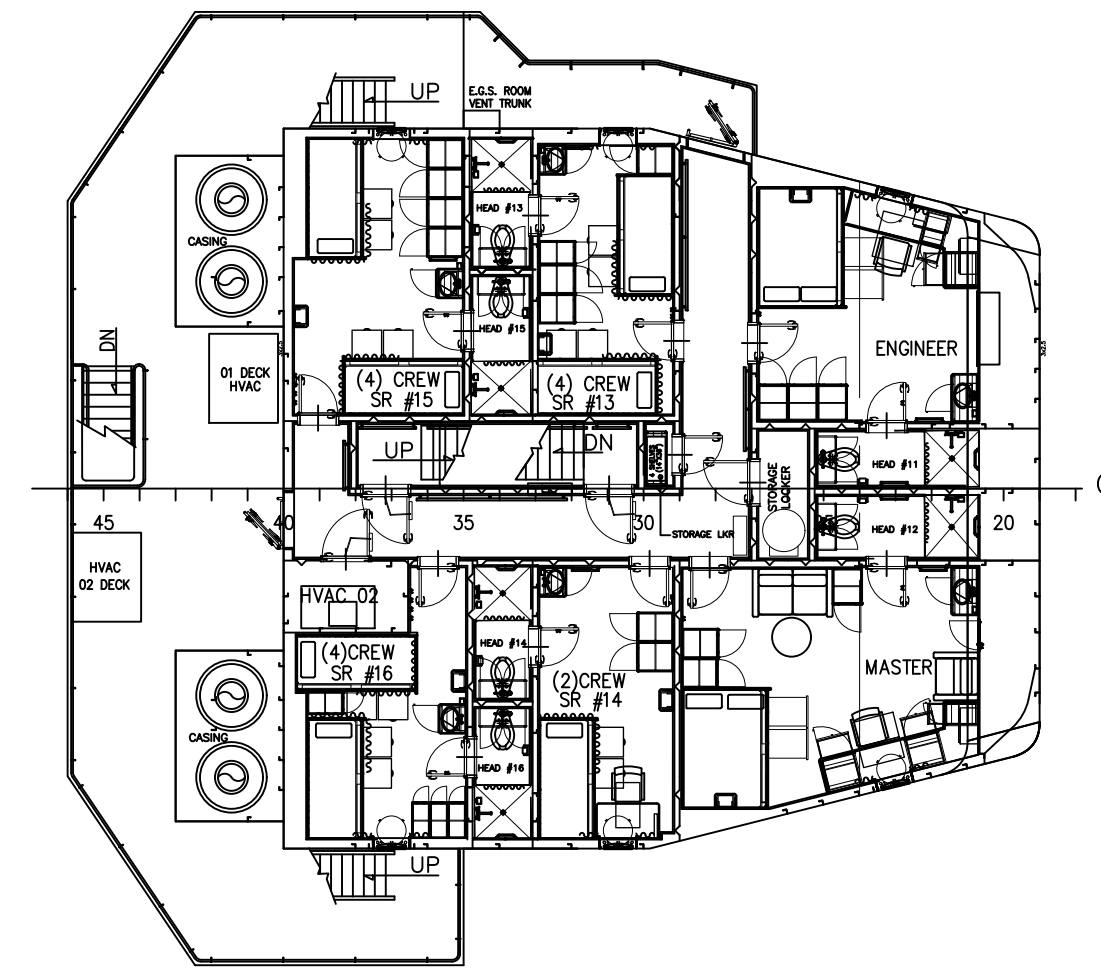
DRAWN BY: A. RHODA	292'-0" x 64'-0" x 24'-6"		
CHK'D. BY: M. STANSBURY	GENERAL ARRANGEMENT & OUTBOARD PROFILE		
APP'D. BY: P. LUBRANO	SCALE: 3/32"=1'-0"	DATE: 8-5-2014	REV. # 3
TASK #	DRAWING # 1.001	HULL # ESG-201 ONLY	SHEET 1 OF 2



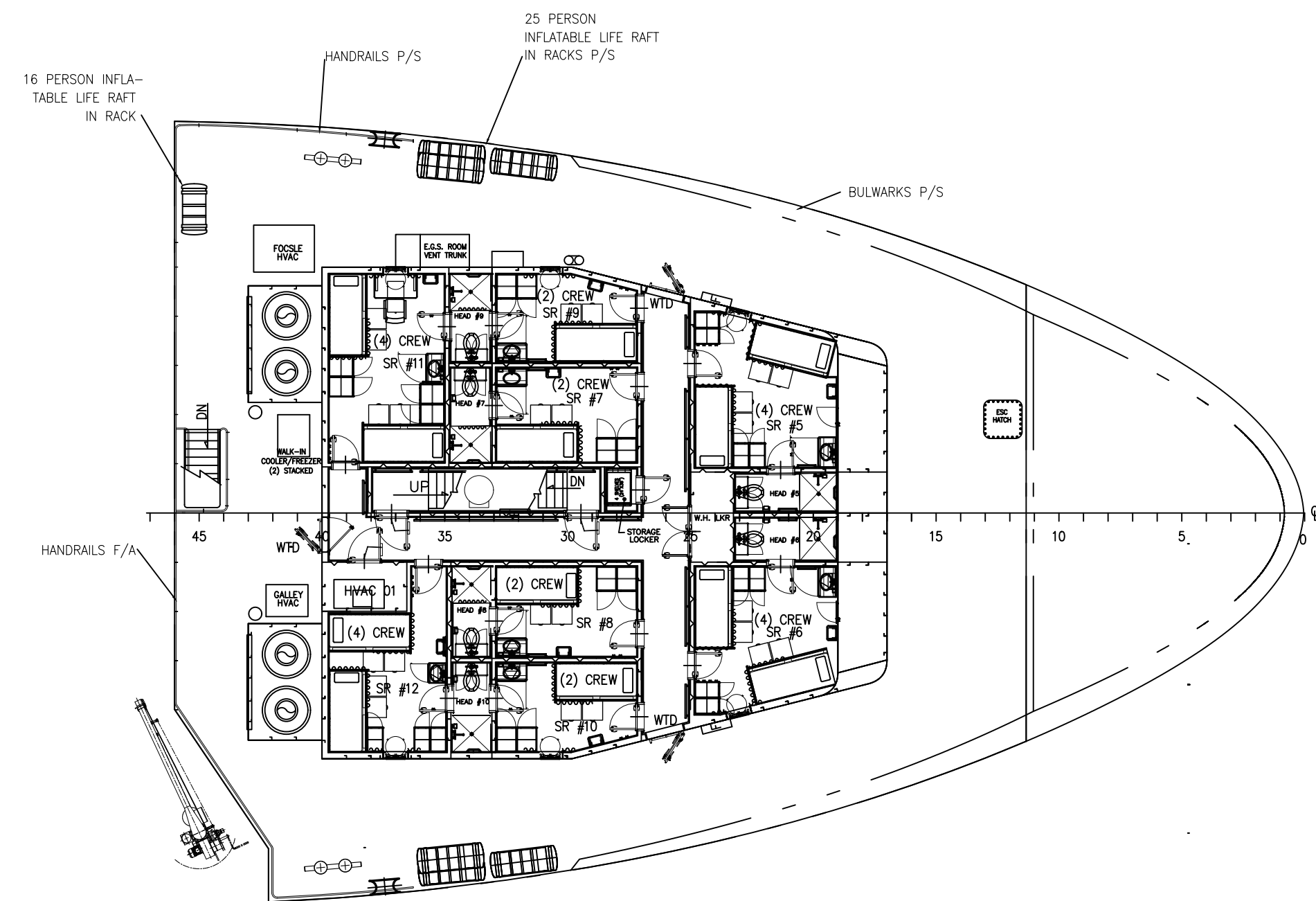
**PILOTHOUSE
TOP DECK**



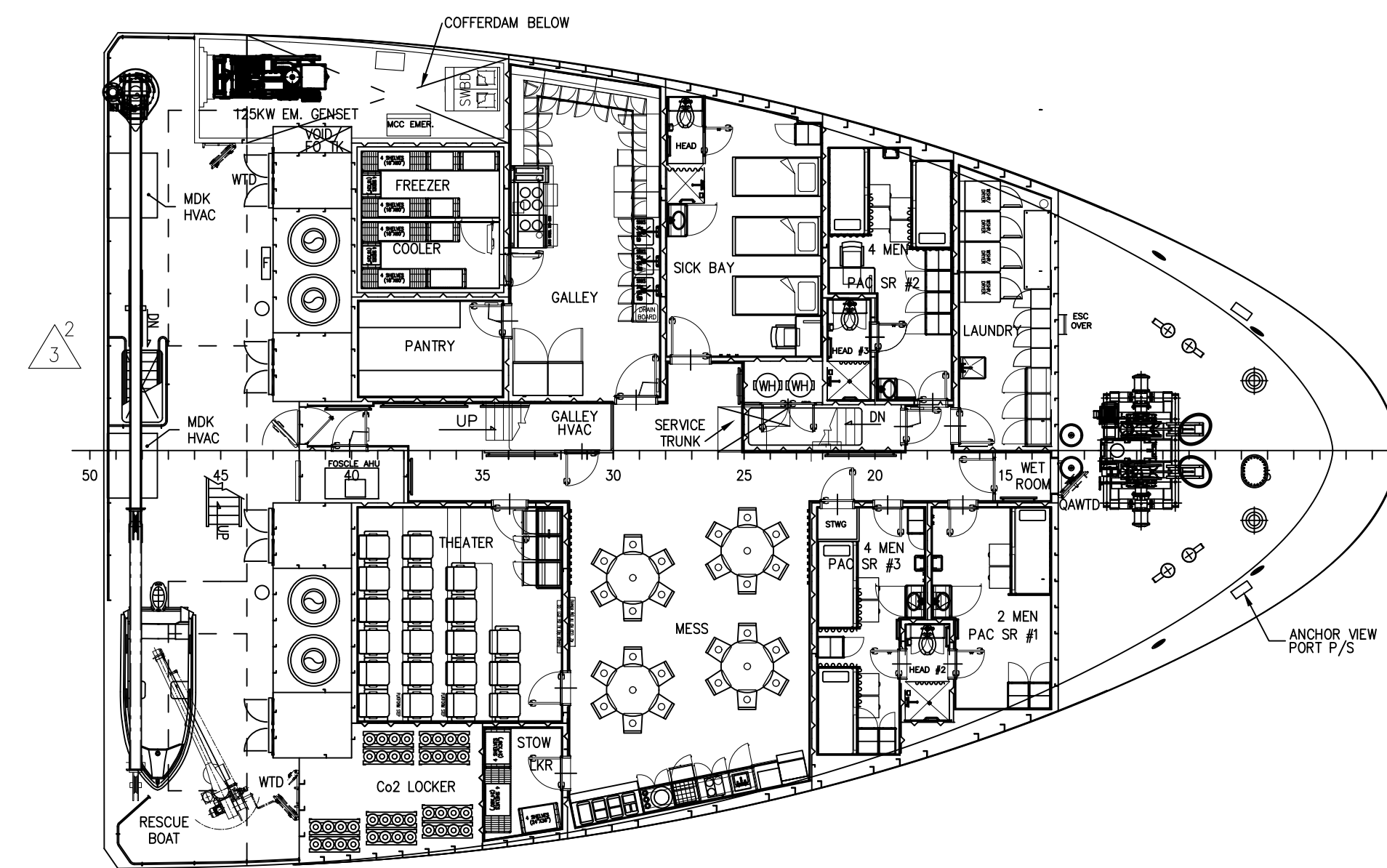
BRIDGE DECK




02 DECK
16 BERTHS



01 DECK
24 BERTHS



FOCSLE DECK
10 BERTHS (PAC)
3 BERTH (SICK BAY)

 HORNBECK OFFSHORE SERVICES			
DRAWN BY: A. RHODA	292'-0" x 64'-0" x 24'-6"		
CH'KD. BY: M. STANSBURY	GENERAL ARRANGEMENT & OUTBOARD PROFILE		
APP'D. BY: P. LUBRANO	SCALE: 3/32" = 1' - 0" DRAWING # 1.001	DATE: 8-5-2014 HULL # ESG-201 ONLY	REV. 3
TASK #	SHEET 2 OF 2		