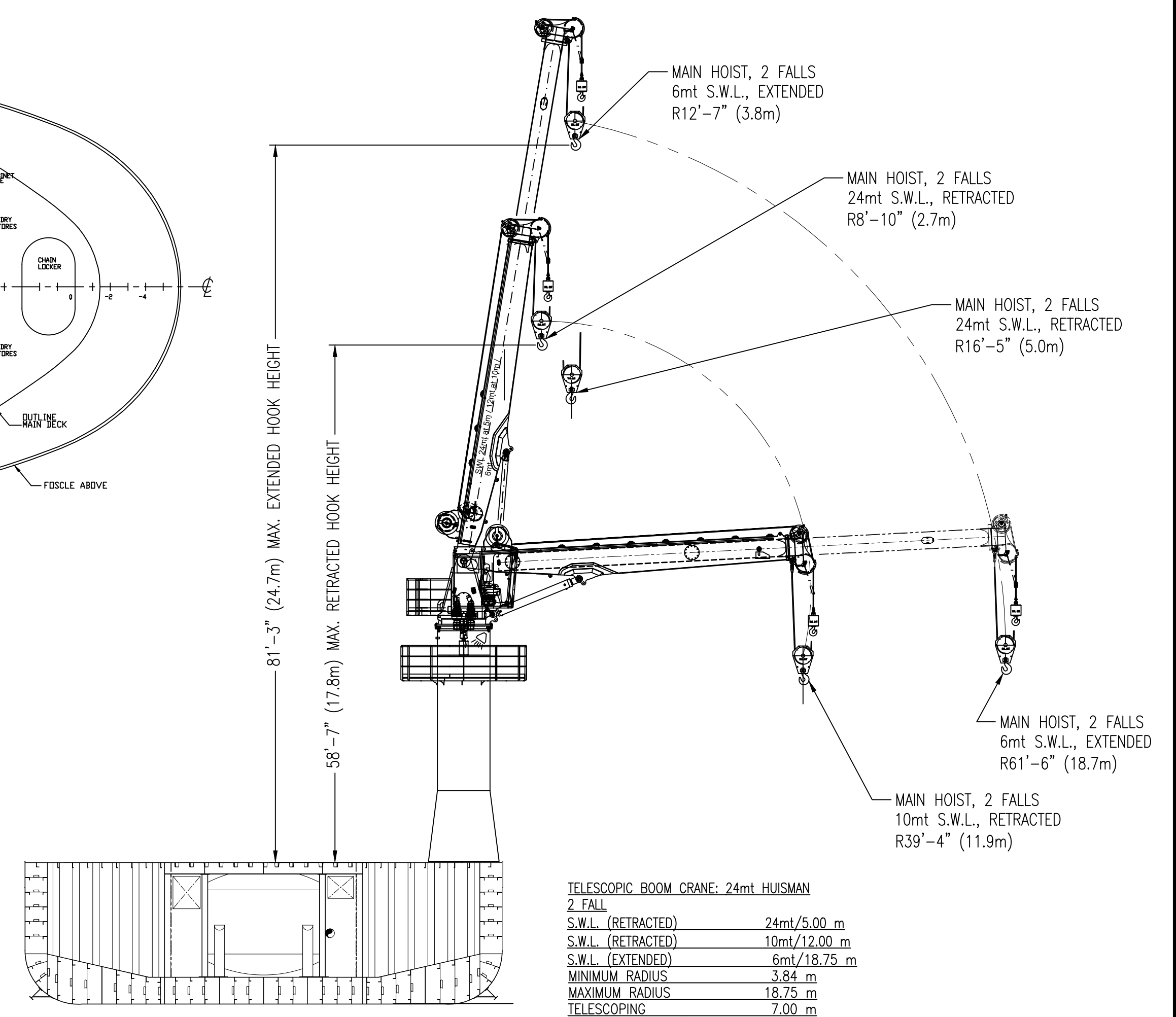
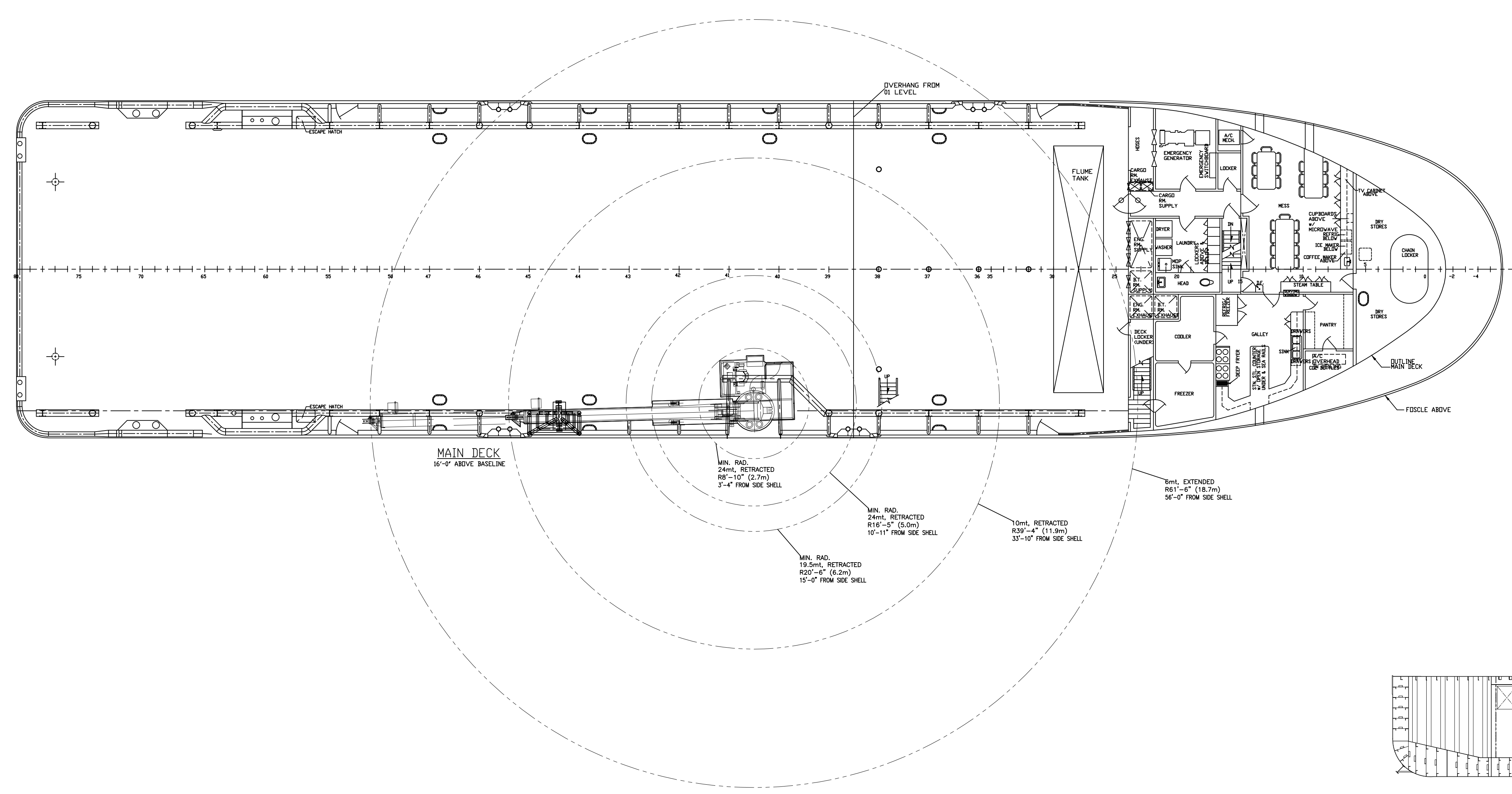
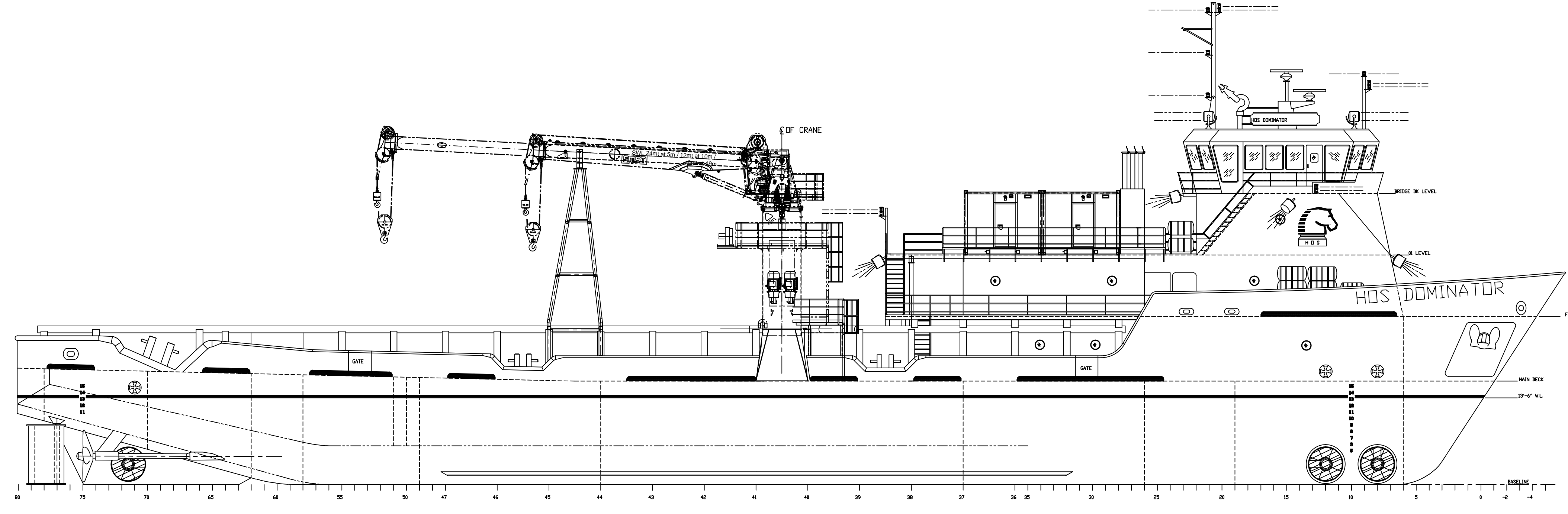



REVISIONS		
REV	DESCRIPTION	DATE



TELESCOPIC BOOM CRANE: 24mt HUISMAN	
2 FALL	
S.W.L. (RETRACTED)	24mt/5.00 m
S.W.L. (RETRACTED)	10mt/12.00 m
S.W.L. (EXTENDED)	6mt/18.75 m
MINIMUM RADIUS	3.84 m
MAXIMUM RADIUS	18.75 m
TELESCOPING	7.00 m



PROFILE

 HORNBECK OFFSHORE SERVICES		
DRAWN BY: Will Thomas	240'-0" X 54'-0" 17'-0"	
CH'KD. BY: Paul Lubrano	CRANE ARRANGEMENT	
APP'D. BY:	SCALE: 3/32" = 1'-0"	DATE: 11/04/10
PROJECT # 4919	DRAWING # 6.805	SHEET 1 OF 1
		REV. 1