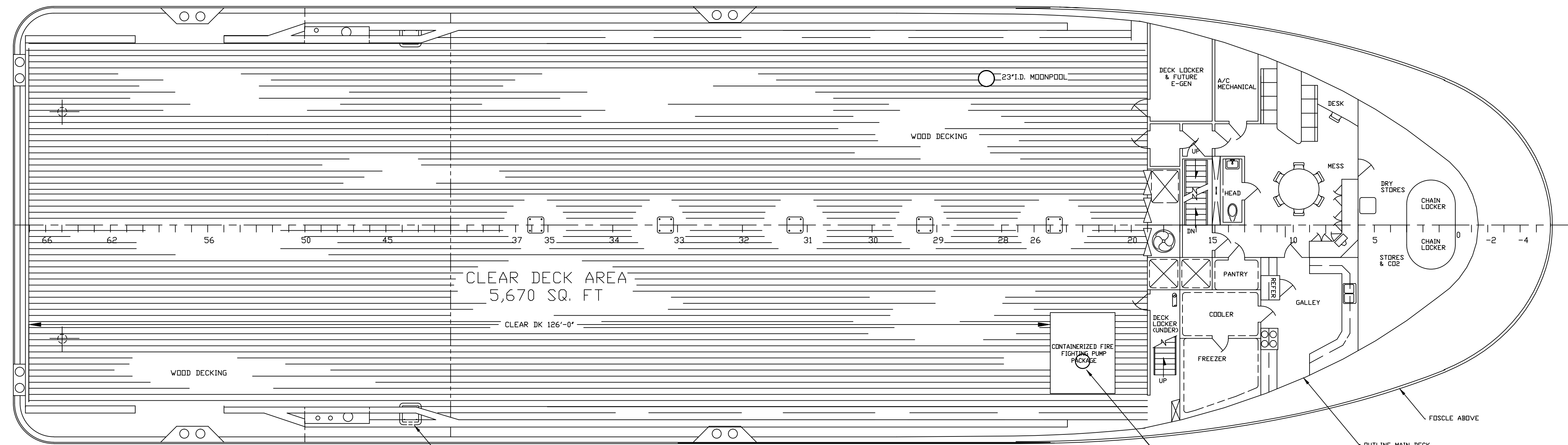
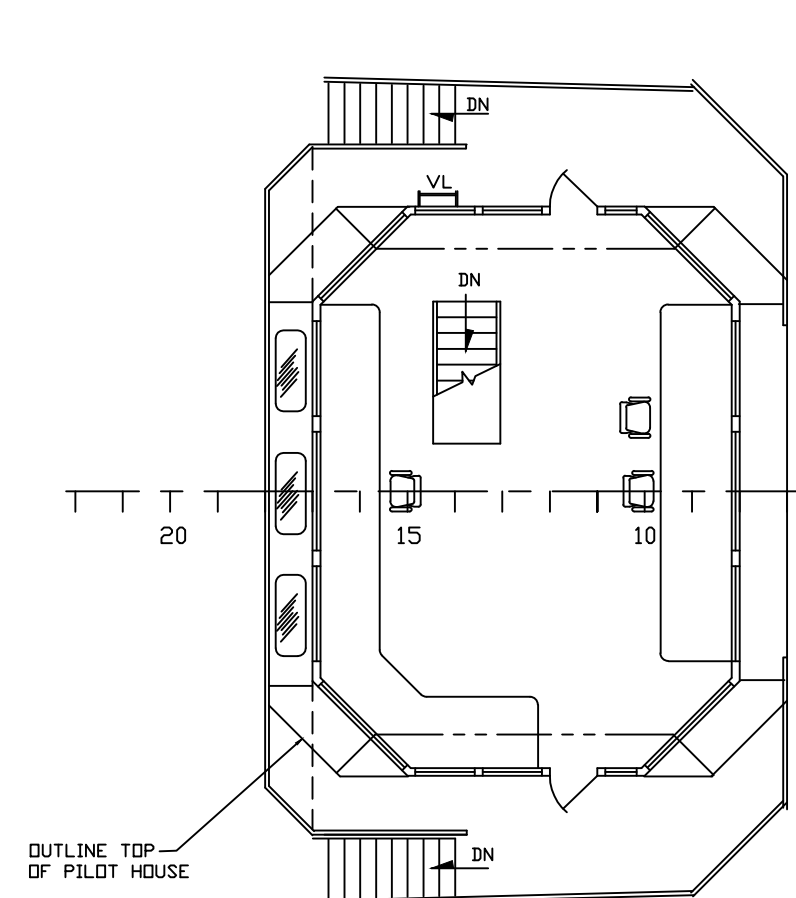


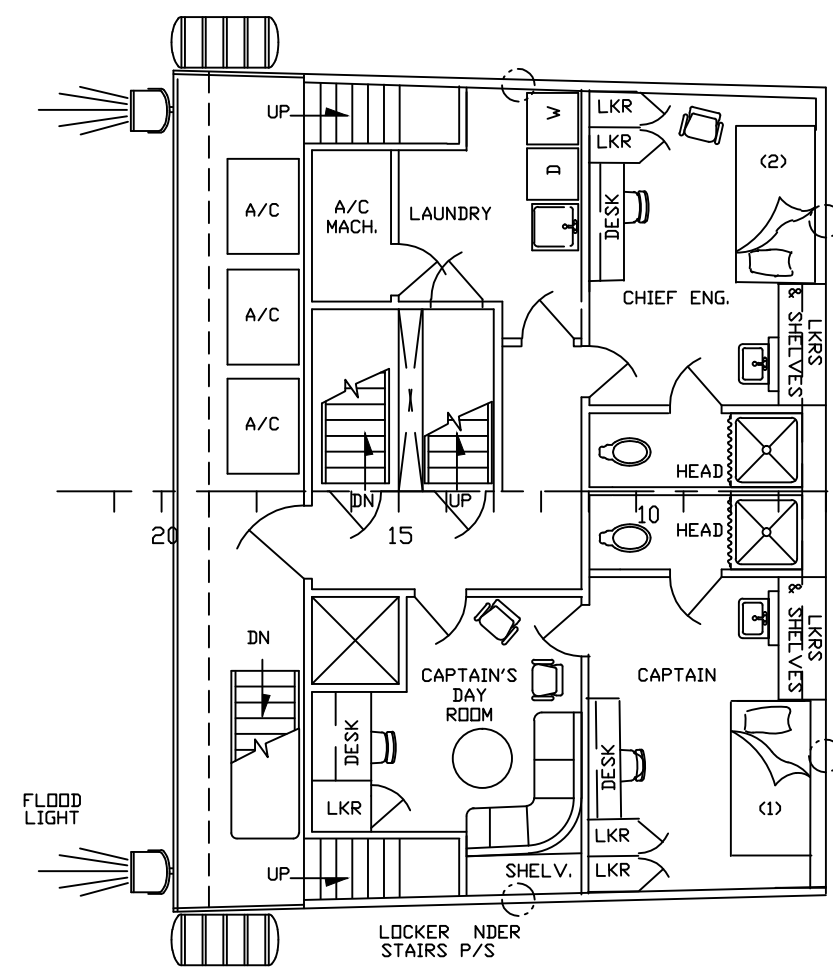
REVISIONS		
REV	DESCRIPTION	DATE
1	ADDED PORT MOONPOOL	3/11/11



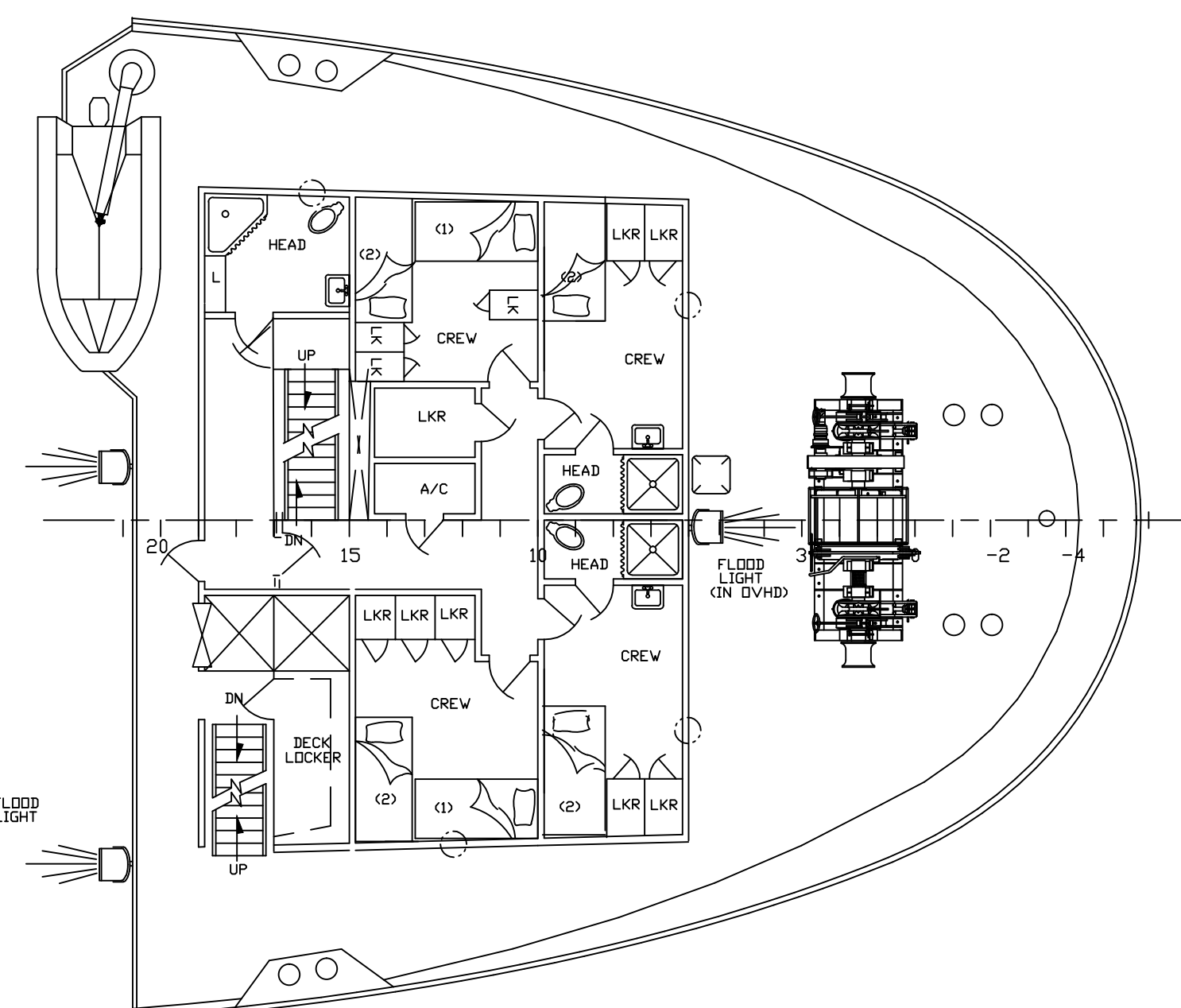
MAIN DECK



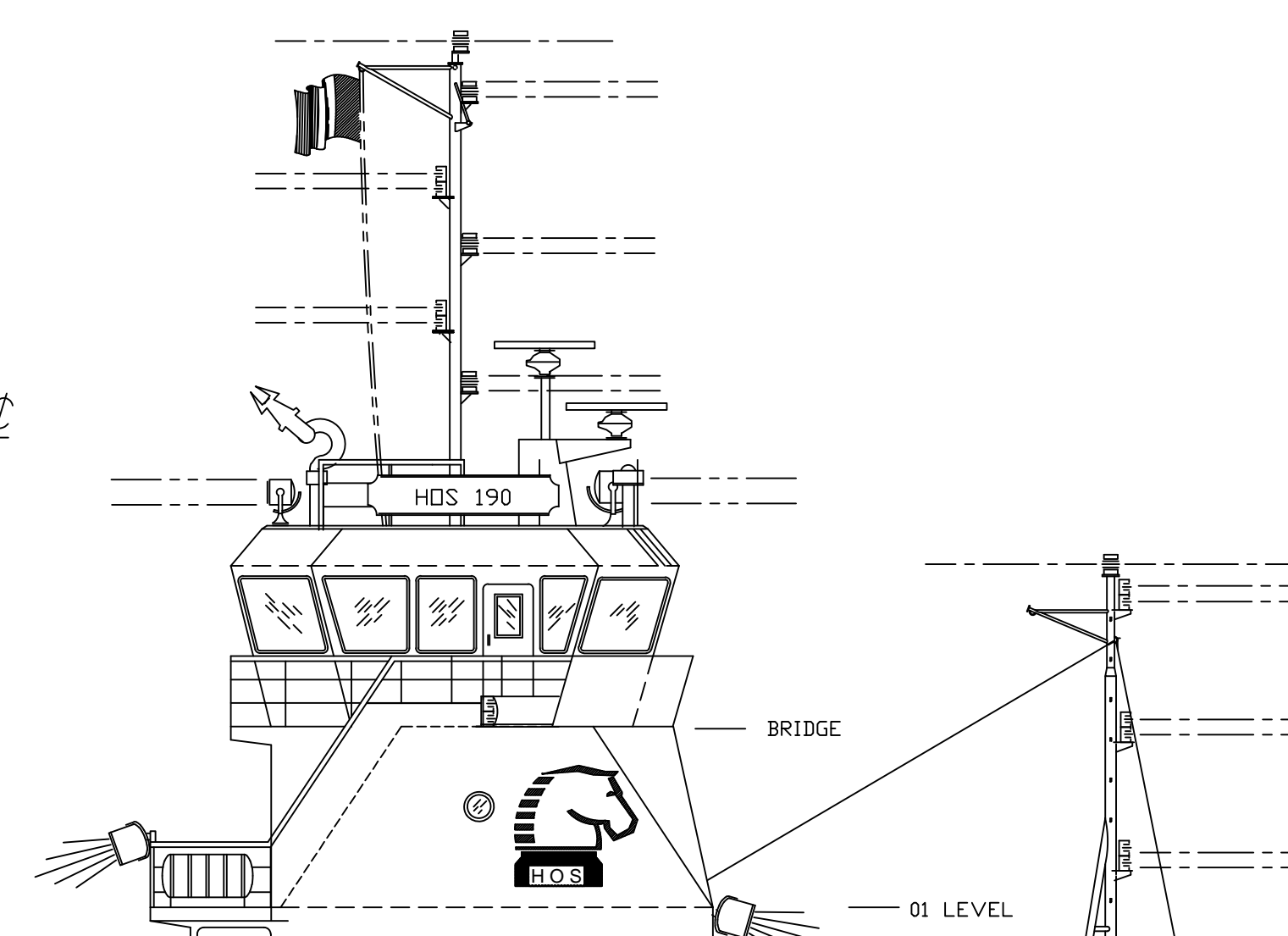
BRIDGE  
44'-0" ABOVE BASELINE



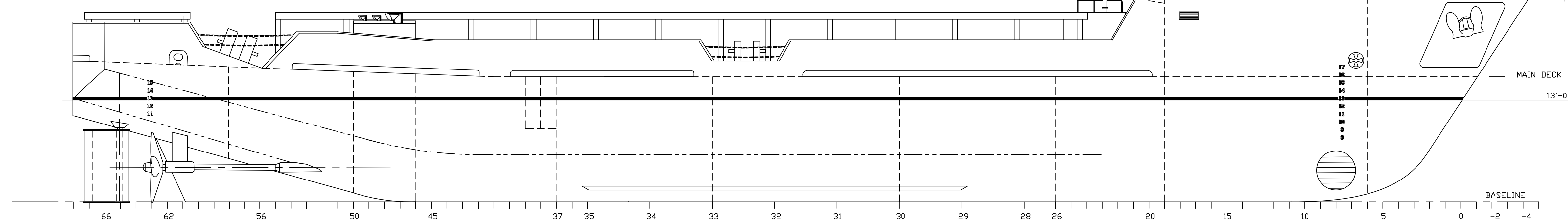
01 LEVEL  
35'-0" ABOVE BASELINE



FOCSLE DECK  
(26'-0" ABOVE BASELINE)



HOS DAKOTA



PROFILE

<p>THIS DRAWING, DESIGN CONCEPT AND SPECIFICATIONS ARE THE PROPERTY OF HORNBECK OFFSHORE SERVICES AND ARE FURNISHED ON A CONFIDENTIAL BASIS WITH AN EXPRESSED UNDERSTANDING THAT THEY WILL NOT BE COPIED IN ANY MANNER USED FOR MANUFACTURE, SOLD, TRANSFERRED, NOR USED TO THE DETRIMENT OF SAID FIRM WITHOUT WRITTEN PERMISSION.</p> <p>HORNBECK OFFSHORE SERVICES</p>			
DRAWN BY:	L. BURCHFIELD	190'-0" X 54'-0" X 16'-0" OSV	
CHK'D. BY:	L. BURCHFIELD	PROFILE & ARRANGEMENTS	
APP'D. BY:	L. SANDERS	SCALE: 1/8" = 1'-0"	DATE: 10/8/98
PROJECT #	5007	DRAWING #	1.001
		HULL (AMI 4239)	REV.
		SHEET 1 OF 1	1