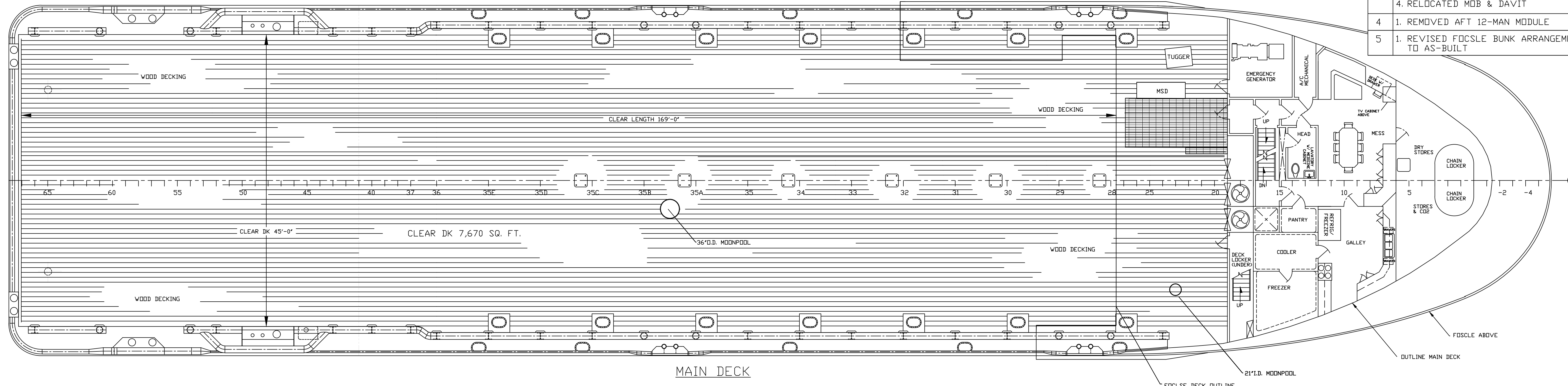
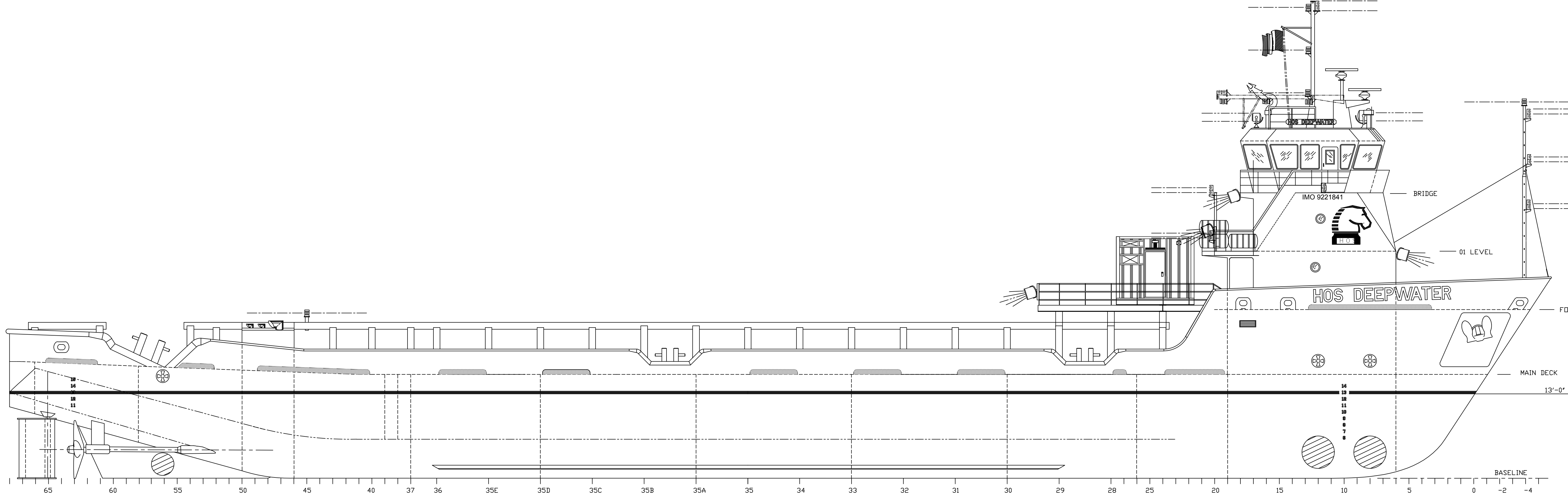


8 7 6 5 4 3 2 1

REVISIONS			
REV	DESCRIPTION	BY	DATE
2	1. ADDED 36" MOONPOOL & FIFI UNIT	MGS	03/10/17
3	1. REMOVED FIFI UNIT 2. INSTALLED MSD ON MAIN DECK 3. INSTALLED 2 X 12-MAN ACCOM MODULES ON ELEVATED PLATFORM. 4. RELOCATED MOB & DAVIT	MGS	10/16/17
4	1. REMOVED AFT 12-MAN MODULE	MGS	08/22/18
5	1. REVISED FOCSLE BUNK ARRANGEMENT TO AS-BUILT	MGS	04/24/19



MAIN DECK



PROFILE

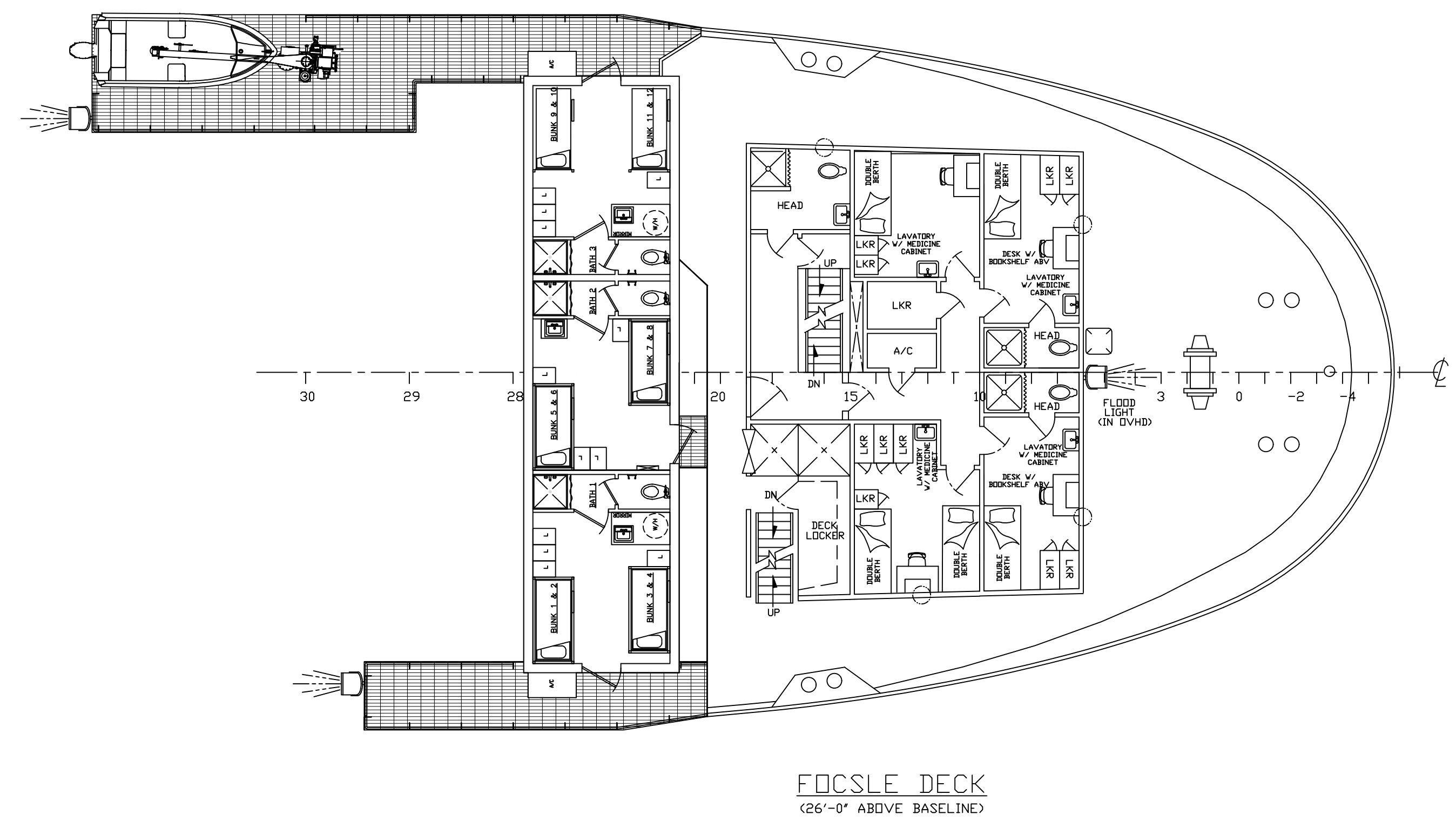
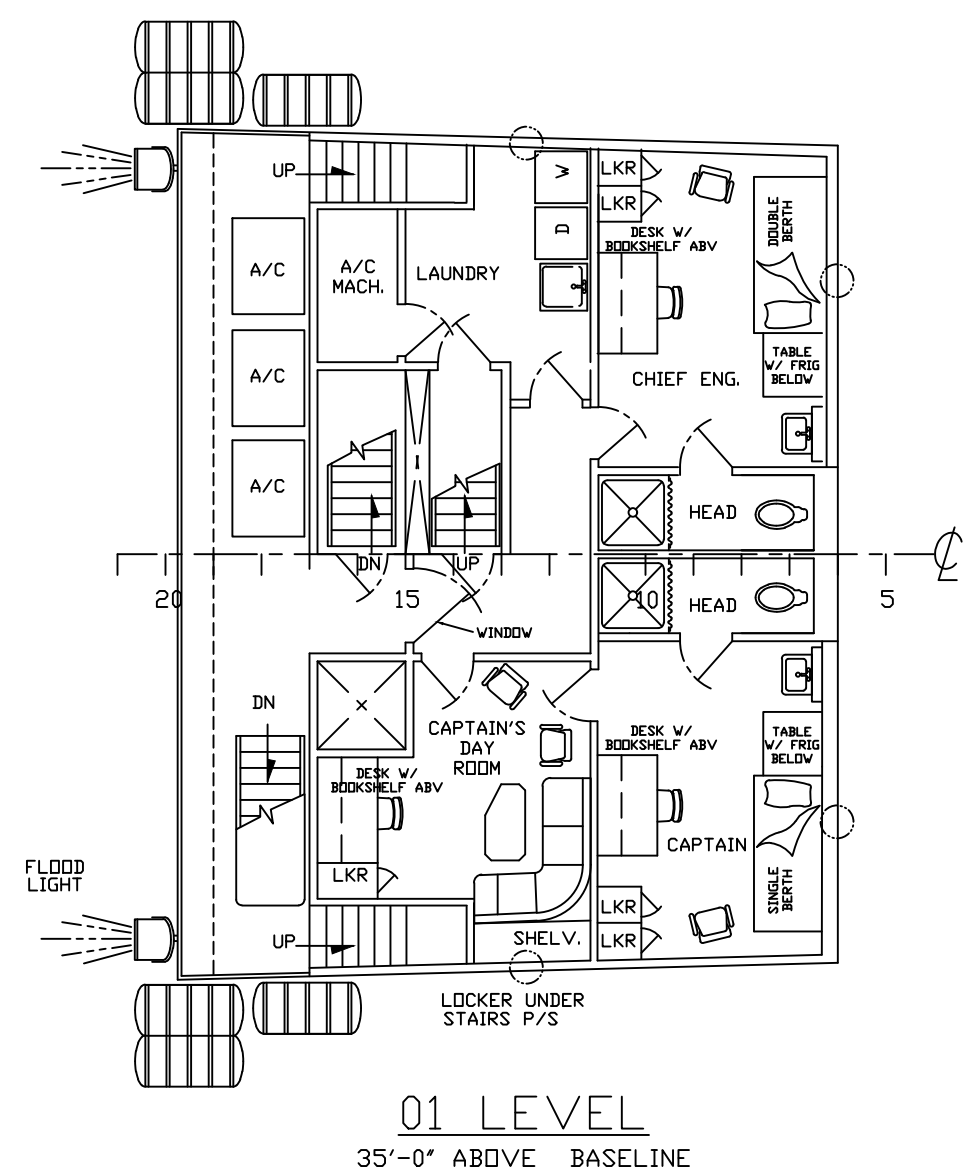
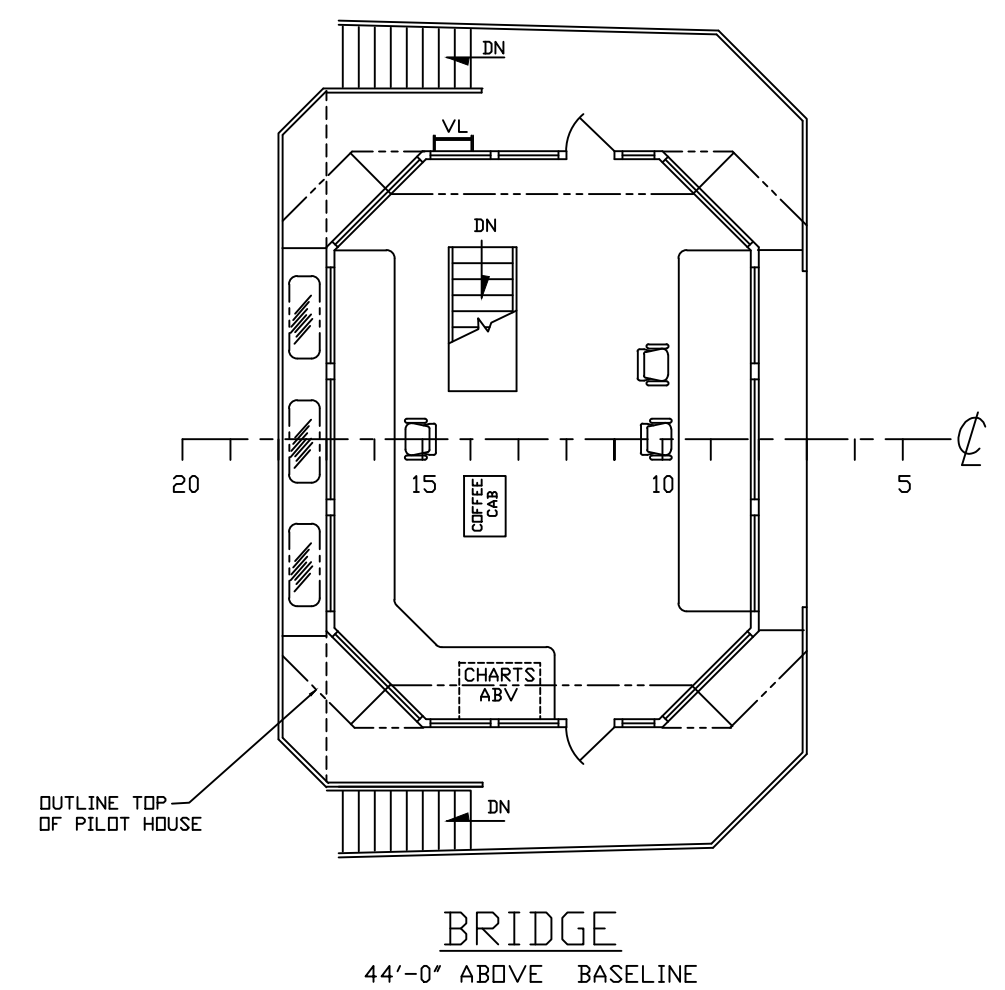
HOS DEEPWATER


HORNBECK OFFSHORE SERVICES

THIS DRAWING, DESIGN CONCEPT AND SPECIFICATIONS ARE THE PROPERTY OF HORNBECK OFFSHORE SERVICES AND ARE FURNISHED ON A CONFIDENTIAL BASIS WITH AN EXPRESSED UNDERSTANDING THAT THEY WILL NOT BE COPIED, IN ANY MANNER USED FOR MANUFACTURE, SOLD, TRANSFERRED, NOR USED TO THE DETRIMENT OF SAID FIRM WITHOUT WRITTEN PERMISSION. HOS ©

DRAWN BY:	MGS	238'-0" x 54'-0" x 16'-0"	
CHK'D. BY:	JJG	OUTBOARD PROFILE & GENERAL ARRANGEMENT	
APP'D. BY:		SCALE: 1/8" = 1'-0"	DATE: 08-10-2018
TASK #	6824	DRAWING #	1.001
		HULL #	LVI-324
		SHEET	1 OF 2
		REV.	5

8 7 6 5 4 3 2 1



 THIS DRAWING, DESIGN CONCEPT AND SPECIFICATIONS ARE THE PROPERTY OF HORNBECK OFFSHORE SERVICES AND ARE FURNISHED ON A CONFIDENTIAL BASIS WITH AN EXPRESSED UNDERSTANDING THAT THEY WILL NOT BE COPIED, IN ANY MANNER USED FOR MANUFACTURE, SOLD, TRANSFERRED, NOR USED TO THE DETRIMENT OF SAID FIRM WITHOUT WRITTEN PERMISSION.			
HORNBECK OFFSHORE SERVICES			
DRAWN BY:	238'-0" x 54'-0" x 16'-0"		
MGS	OUTBOARD PROFILE & GENERAL ARRANGEMENTS		
CH'KD. BY:	JYG		
APP'D. BY:	SCALE: 1/8" = 1'-0"	DATE: 08-10-2018	REV. #
TASK #	DRAWING #	HULL #	5
6824	1.001	LVI-324	
		SHEET	2 OF 2