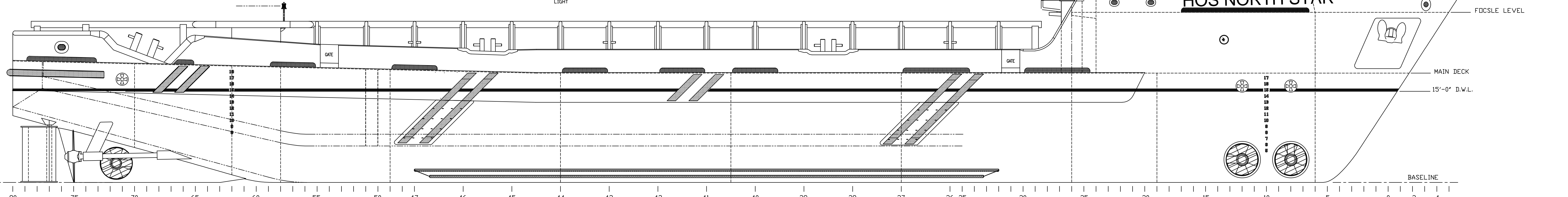
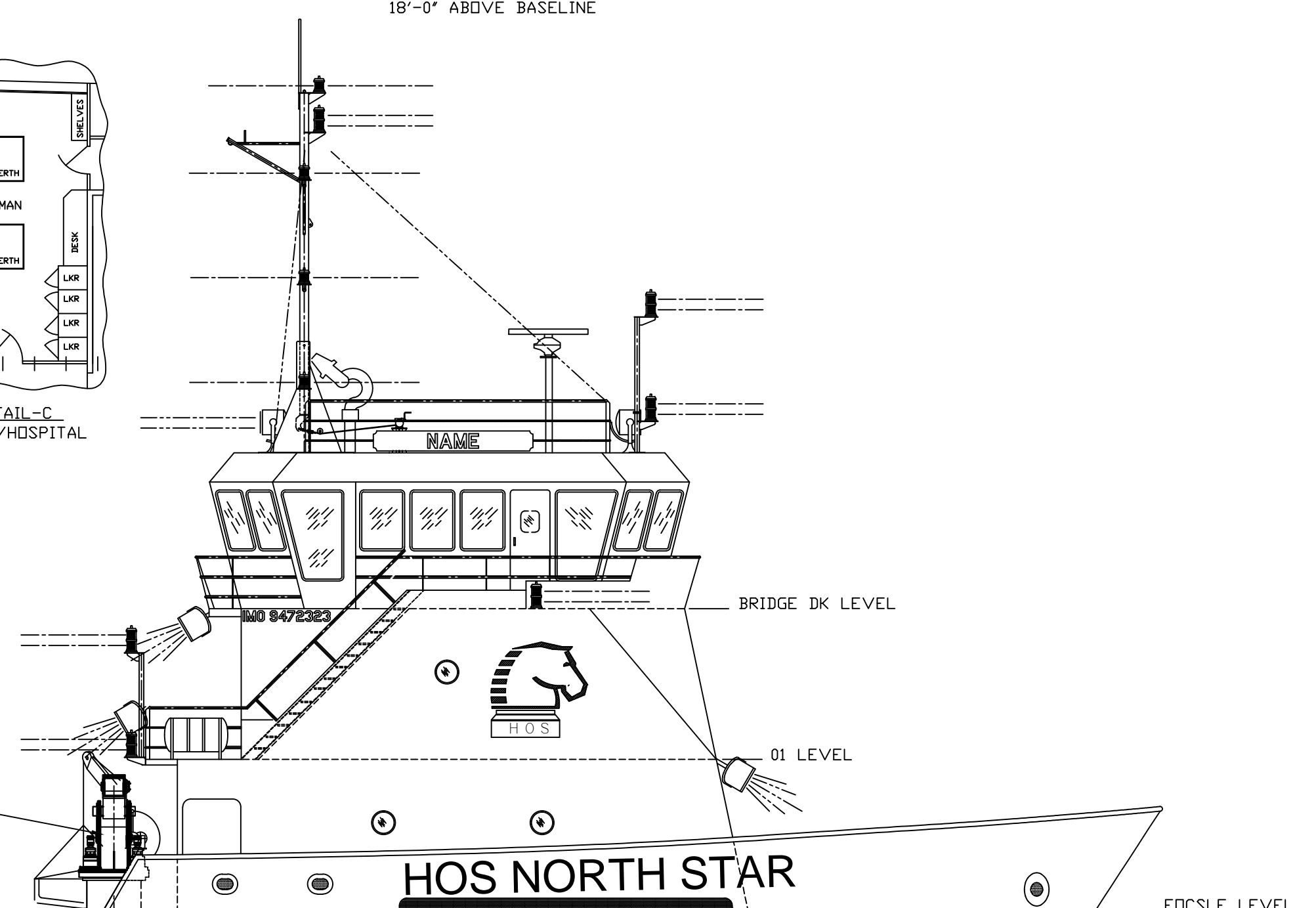
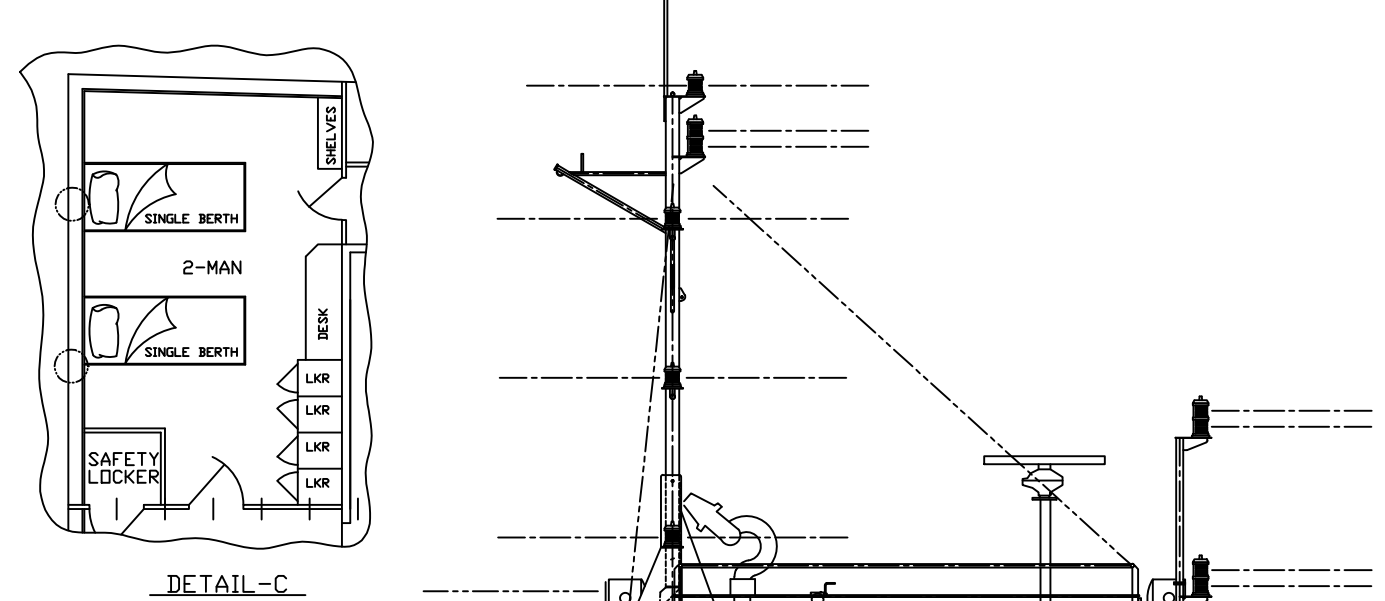
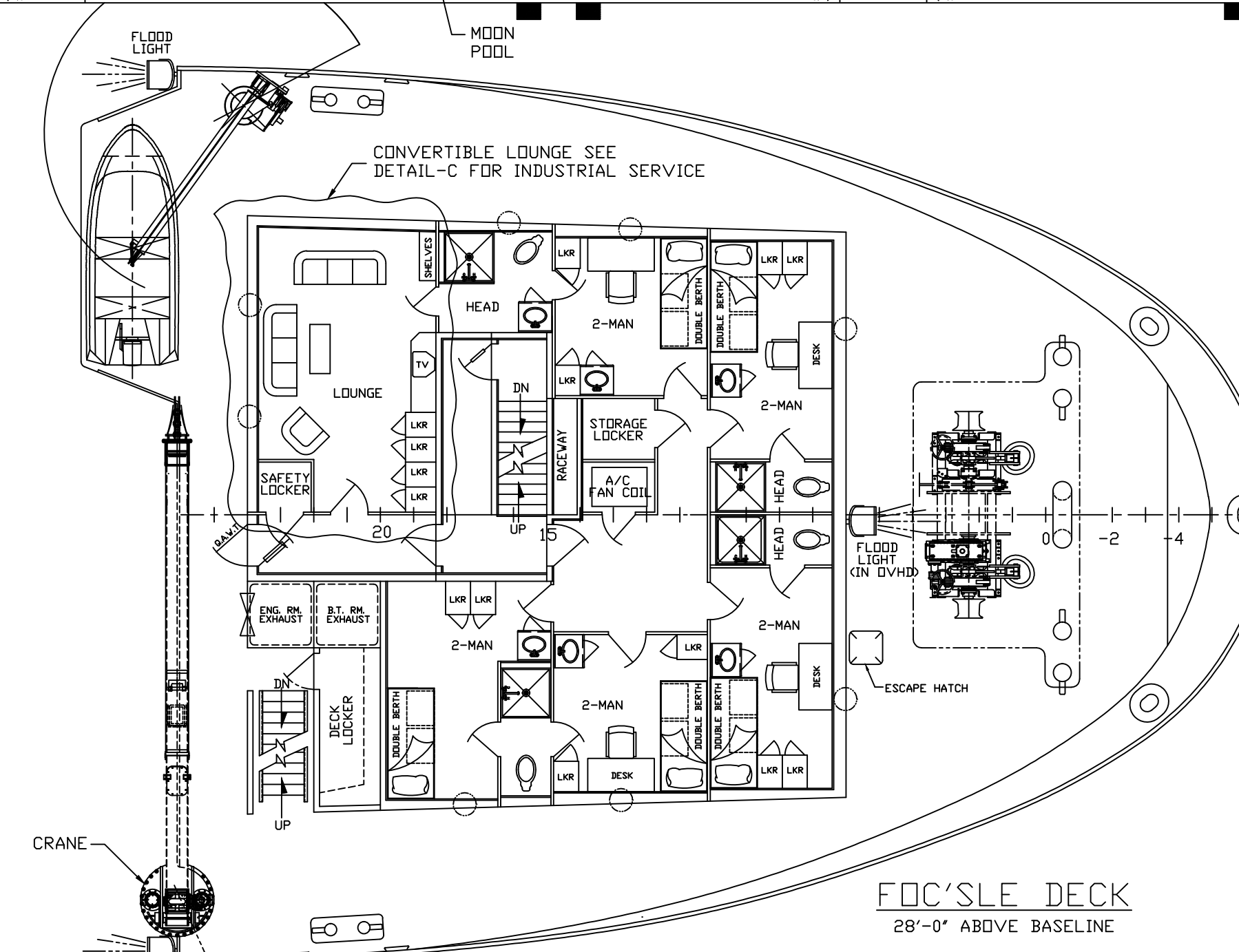
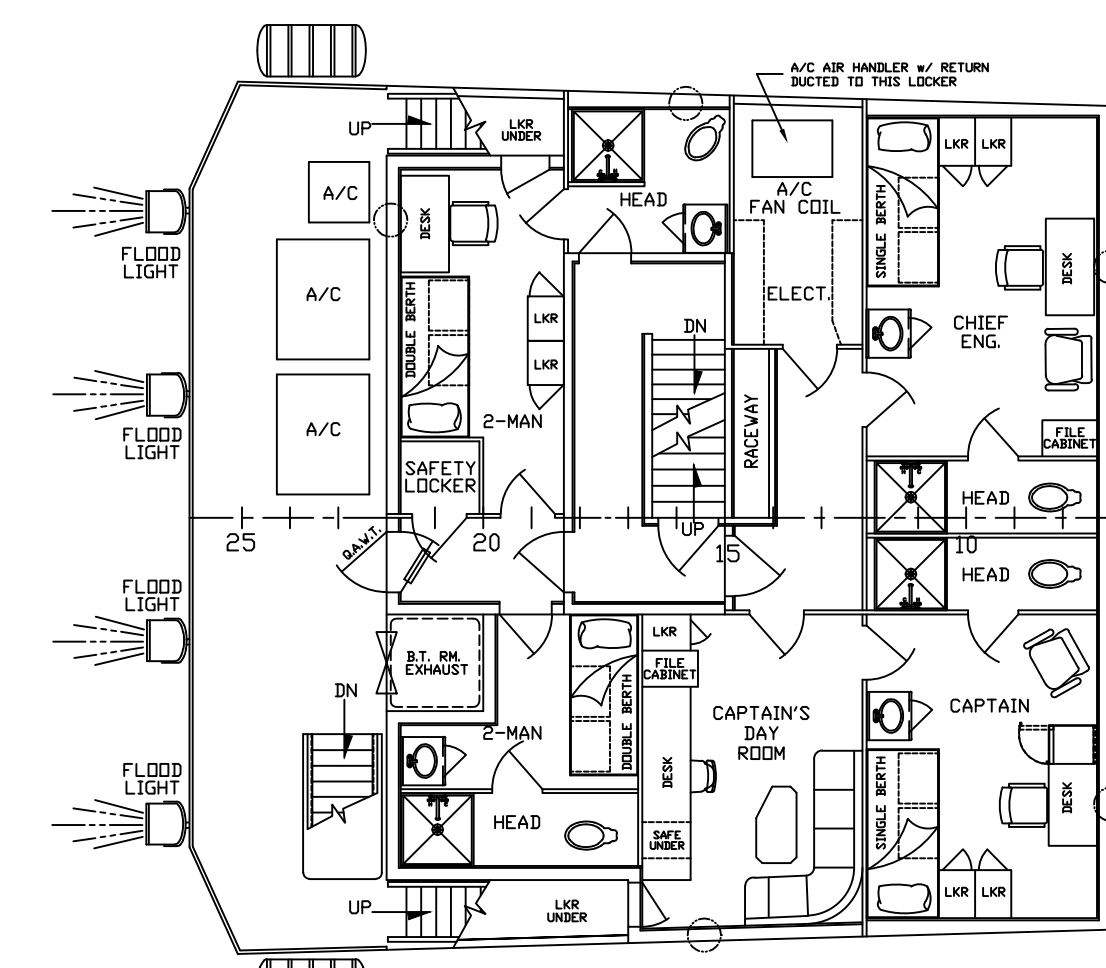
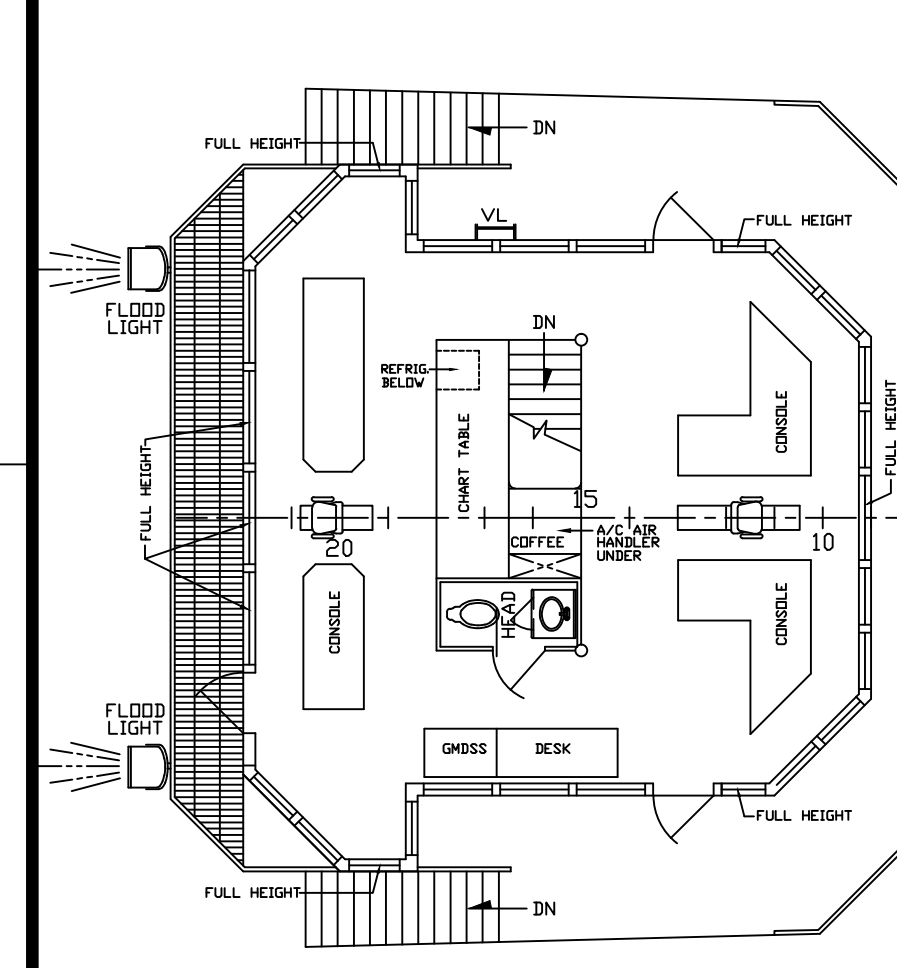
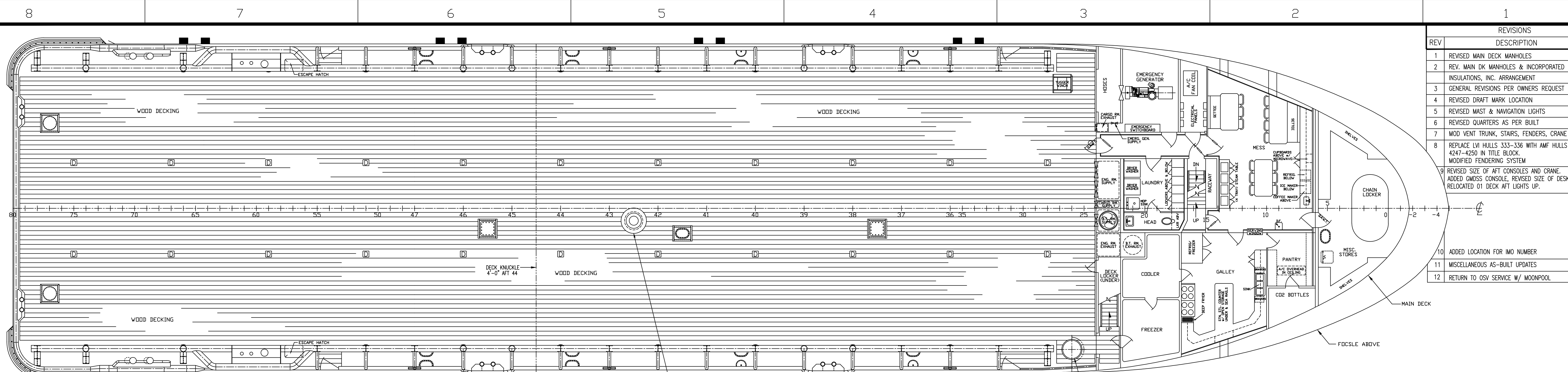


REVISIONS		
REV	DESCRIPTION	DATE
1	REVISED MAIN DECK MANHOLES	5-7-02
2	REV. MAIN DK MANHOLES & INCORPORATED INSULATIONS, INC. ARRANGEMENT	5-21-02
3	GENERAL REVISIONS PER OWNERS REQUEST	8-30-02
4	REVISED DRAFT MARK LOCATION	9-28-02
5	REVISED MAST & NAVIGATION LIGHTS	11-15-02
6	REVISED QUARTERS AS PER BUILT	3-7-03
7	MOD VENT TRUNK, STAIRS, FENDERS, CRANE	9-22-06
8	REPLACE LVI HULLS 333-336 WITH AMF HULLS 4247-4250 IN TITLE BLOCK. MODIFIED FENDERING SYSTEM	12-26-06
9	REVISED SIZE OF AFT CONSOLES AND CRANE. ADDED GROSS CONSOLE, REVISED SIZE OF DESK. RELOCATED 01 DECK AFT LIGHTS UP.	3/15/07
10	ADDED LOCATION FOR IMO NUMBER	10-03-07
11	MISCELLANEOUS AS-BUILT UPDATES	04-15-08
12	RETURN TO OSV SERVICE W/ MOONPOOL	11-22-11



PROFILE

HORNBECK OFFSHORE SERVICES	
DRAWN BY: JONATHAN LEJEUINE	240'-0" X 54'-0" X 19'-0" OSV
CH'KD. BY:	OUTBOARD PROFILE & GENERAL ARRANGEMENTS
APP'D. BY:	SCALE: 1/8" = 1'-0" DATE: 4-30-2002 REV. 12
APP'D. BY:	AMF HULLS 4247-4250 SHEET 1 OF 1
DRAWING # 1.001	SHEET 1 OF 1