



HORNBECK OFFSHORE

HOS 370

DP-2 MPSV

HORNBECK OFFSHORE CONTINUES TO PROVIDE INNOVATIVE MARINE SOLUTIONS TO MEET THE EVOLVING NEEDS OF THE DEEP WATER AND ULTRA-DEEP WATER ENERGY INDUSTRY.

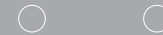
WE HAVE CREATED THE HIGHLY INNOVATIVE HOS 370 DP-2 MULTI PURPOSE SUPPORT VESSELS (MPSVS). THE HOS CENTERLINE AND HOS STRONGLINE ARE THE LARGEST, MOST FLEXIBLE DP-2 CLASS OFFSHORE VESSELS AVAILABLE IN THE WORLD TODAY.

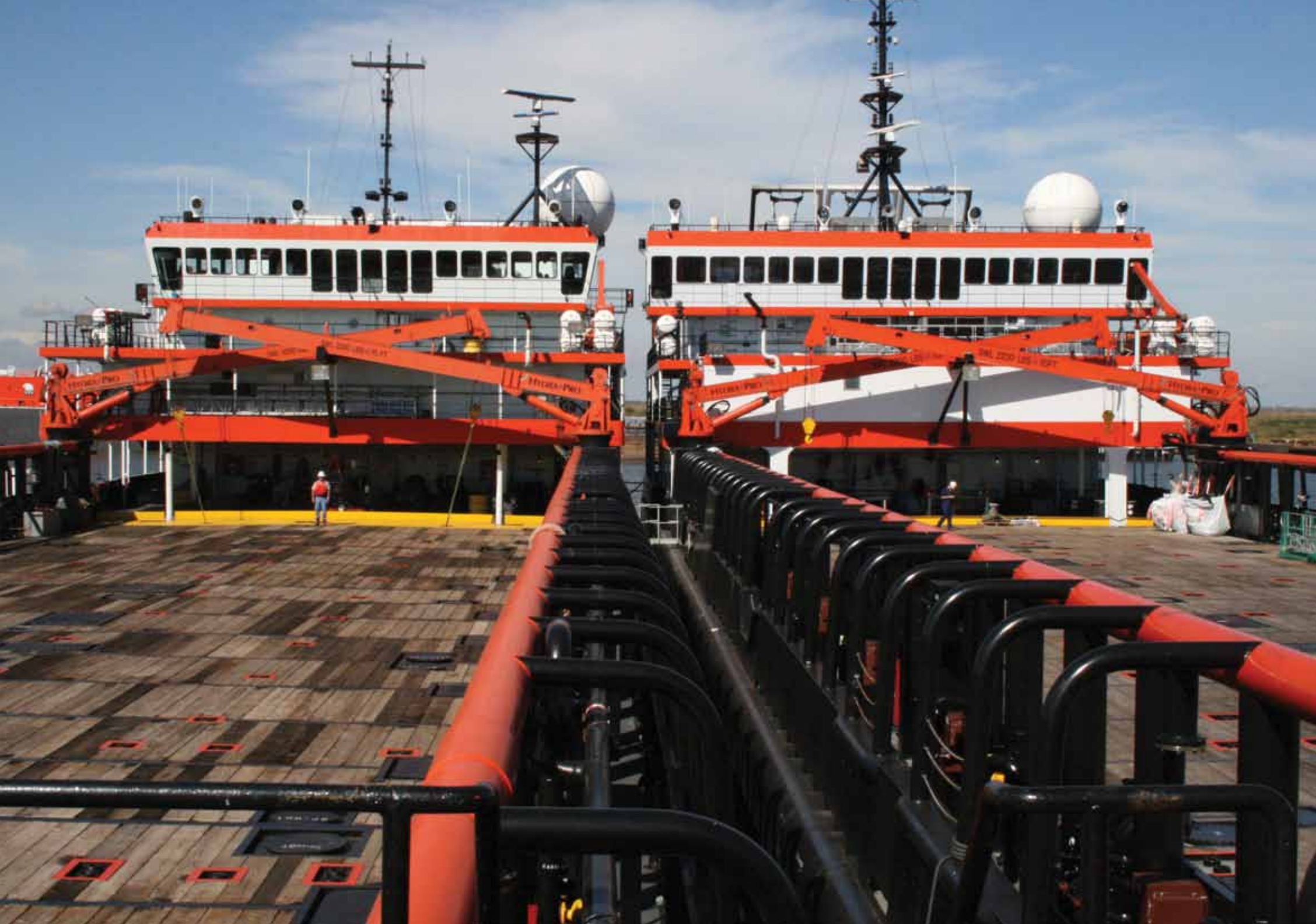
THE HOS MPSVS WERE BUILT TO DELIVER THE HIGHEST LEVEL OF SAFETY TO OUR CUSTOMERS BY INCLUDING DESIGN ELEMENTS SUCH AS DOUBLE HULL CONSTRUCTION, VAPOR RECOVERY SYSTEMS AND MACHINERY HOUSED IN THE BOW OF THE VESSEL.

THESE ONE-OF-A-KIND WORLD-CLASS VESSELS ARE FULLY SOLAS AND JONES ACT COMPLIANT AND ARE UNITED STATES COAST GUARD CERTIFIED TO SERVE AS SUPPLY VESSELS, OFFSHORE CONSTRUCTION VESSELS, PETROLEUM TANKERS AND CHEMICAL TANKERS.

HOS 370

DP-2 MPSV





HOS 370 MULTI-PURPOSE SUPPORT VESSEL

DIMENSIONS & REGULATORY INFO

Length	381 ft 4 in (116.2m)
Beam	72 ft 0 in (21.9m)
Tonnage	Gross: 5,960 GT Net: 2,436 GT
Max Draft	22 ft 11 in (6.985m) in subchapter L class
Min Draft	7 ft 8 in (2.34m)
IMO	9040546
O.N.	981472
Flag	United States
Certifications	Oceans-SOLAS, SIP, USCG Subchapter D/O, USCG Subchapter I/L, UWILD
Classification	American Bureau of Shipping +A1, +AMS, +DPS-2, ACC, Loadline, Oil Carrier/Chem Carrier/ Offshore Support

PERFORMANCE

Cruise Speed	9.5 kts 190 gal/hr (719 l/hr)
Max Speed	11.0 kts 280 gal/hr (1,060 l/hr)

PROPULSION, MACHINERY & STEERING

Primary Generators	4 x Caterpillar 3516C Total Rating: 8,400 kW 600V/60Hz
Auxiliary Generators	3 x Caterpillar C 18 Total Rating: 1,275 kW 480/60Hz
Main Propulsion	2 x Rolls Royce Marine FPP Steerable Total Horsepower: 6,000 hp
Aft Bow Thruster	2 x Rolls Royce Marine CPP Drop Down Azimuth Total Horsepower: 3,000 hp
Forward Bow Thrusters	1 x Rolls Royce Marine CPP Tunnel Total Horsepower: 1,500 hp
Stern Thruster	1 x Rolls Royce Marine CPP Tunnel Total Horsepower: 1,500 hp

CAPACITIES & DELIVERY RATES

Deadweight	7,903 LT (8,029 MT)
Deck Area	11,600 ft ²
Deck Load Rating	1,024 lbs/ft ² (5 MT/m ²)
Liquid Mud	30,962 bbl (4,923 m ³)
Potable Water	65,156 gal (247 m ³)
Cargo Oil (D/O)	24,591 bbl (3,909 m ³)
Rig Fuel (l/L)	32,862 bbl (5.2 m ³)
Freezer Area	850 ft ³ (24 m ³)
Cooler Area	850 ft ³ (24 m ³)

ELECTRONICS

Auto Pilot, CCTV Cameras, Cyscan, Depth Sounder, DGPS, EPIRB, Gyro Compass, Joystick Control, L-3 NMS 6000, Mag Compass, MAMS/VMS, Navtex, Public Phone System w/loudhailer, Radar (S-band), SARTs, VHF Radio, VHF Radio (Handheld), Windbird, X-band Radar, VSAT

ACCOMMODATIONS

18 air conditioned/heated staterooms for 47 person(s) berthing total. Fixed rooms are configured as follows:

2 air conditioned staterooms for 1 person(s) berthing each
9 air conditioned staterooms for 2 person(s) berthing each
1 air conditioned stateroom for 3 person(s) berthing each
6 air conditioned staterooms for 4 person(s) berthing each

Additional accommodations include:
Client office, lounge and hospital

Additional accommodations units can be added for additional 31 berthings

SPECIAL FEATURES

Roll Damping	Anti-roll tank, Passive
Deck Crane	3 x Hydra Pro HP70/20T
ROV	Suitable for 2 x Perry XLS 150 HP

HOS CENTERLINE FEATURES



HOS 370 MULTI-PURPOSE SUPPORT VESSEL

DIMENSIONS & REGULATORY INFO

Length	381 ft 4 in (116.2m)
Beam	72 ft 0 in (21.9m)
Tonnage	Gross: 5,984 GT Net: 3,096 GT
Max Draft	22 ft 10 in (6.96m) in subchapter L class
Min Draft	7 ft 8 in (2.34m)
IMO	9040534
O.N.	988333
Flag	United States
Certifications	Oceans-SOLAS, SIP, USCG Subchapter I/L, UWILD
Classification	American Bureau of Shipping, +A1, +AMS, +DPS-2, ACC, Loadline, Oil Carrier/Chem Carrier/ Offshore Support

PERFORMANCE

Cruise Speed	9.5 kts 190 gal/hr (719 l/hr)
Max Speed	11.0 kts 280 gal/hr (1,060 l/hr)

PROPULSION, MACHINERY & STEERING

Primary Generators	4 x Caterpillar 3516C Total Rating: 8,400 kW 600V/60Hz
Auxiliary Generators	3 x Caterpillar C 18 Total Rating: 1,275 kW 480V/60Hz
Main Propulsion	2 x Rolls Royce Marine FPP Steerable Total Horsepower: 6,000 hp
Aft Bow Thruster	2 x Rolls Royce Marine CPP Drop Down Azimuth Total Horsepower: 3,000 hp
Forward Bow Thrusters	1 x Rolls Royce Marine CPP Tunnel Total Horsepower: 1,500 hp
Stern Thruster	1 x Rolls Royce Marine CPP Tunnel Total Horsepower: 1,500 hp

CAPACITIES & DELIVERY RATES

Deadweight	7,881 LT (8,008 MT)
Deck Area	11,600 ft ²
Deck Load Rating	1,024 lbs/ft ² (5 MT/m ²)
Liquid Mud	30,962 bbl (4,923 m ³)
Potable Water	65,156 gal (247 m ³)
Cargo Oil (D/O)	24,591 bbl (3,909 m ³)
Rig Fuel (l/L)	32,763 bbl (5,209 m ³)
Freezer Area	850 ft ³ (24 m ³)
Cooler Area	850 ft ³ (24 m ³)

ELECTRONICS

Auto Pilot, CCTV Cameras, Cyscan, Depth Sounder, DGPS, EPIRB, Gyro Compass, Joystick Control, L-3 NMS 6000, Mag Compass, MAMS/VMS, Navtex, Public Phone System w/loudhailer, Radar (S-band), SARTs, VHF Radio, VHF Radio (Handheld), Windbird, X-band Radar, VSAT

ACCOMMODATIONS

20 air conditioned/heated staterooms for 52 person(s) berthing total. Fixed rooms are configured as follows:

2 air conditioned staterooms for 1 person(s) berthing each
10 air conditioned staterooms for 2 person(s) berthing each
2 air conditioned staterooms for 3 person(s) berthing each
6 air conditioned staterooms for 4 person(s) berthing each

Additional accommodations include:
Client office, lounge and hospital

Additional accommodations units can be added for additional 56 berthings

SPECIAL FEATURES

Roll Damping	Anti-roll tank, Passive
Deck Crane	3 x Hydra Pro HP70/20T
ROV	Suitable for 2 x Perry XLS 150 HP

HOS STRONGLINE FEATURES



HOS STRONGLINE
NEW ORLEANS, LA.



USCG SUBCHAPTER L SERVICE

- Liquid Mud Transportation
- Drilling Support
- ROV Support
- Saturation Diving
- Pipeline Remediation
- Decommissioning
- Deep Well Intervention

USCG SUBCHAPTER I SERVICE

- Subsea Construction/IMR
- Flexible Umbilical Pipelay
- Power Cable and Fiber Optic Installation
- Trenching
- Flotel/Accommodations
- Hurricane Remediation
- Specialty Cargoes



USCG
SUBCHAPTER
D/O
SERVICE

- Deep Water Well Test
- Offshore Refueling Operations
- Petroleum Transportation
- Chemical Transportation

CERTIFIED AS A
VESSEL, CONST
VESSEL AND TA
THAT'S HOS POW

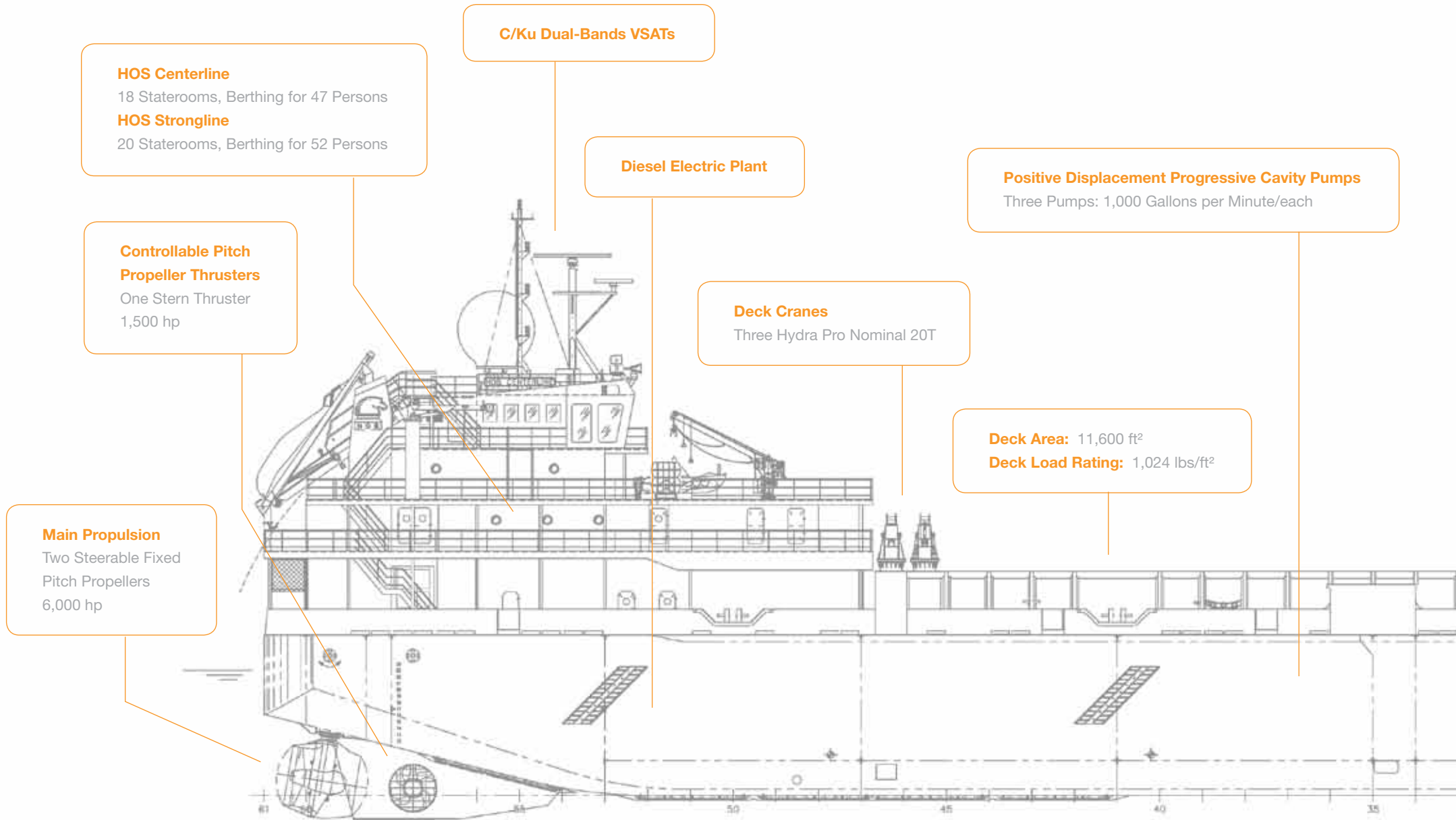


A SUPPLY
CONSTRUCTION
LINKER.
POWER.

HORNBECK OFFSHORE

Service with Energy™





HOS Centerline
18 Staterooms, Berthing for 47 Persons
HOS Strongline
20 Staterooms, Berthing for 52 Persons

C/Ku Dual-Bands VSATs

Diesel Electric Plant

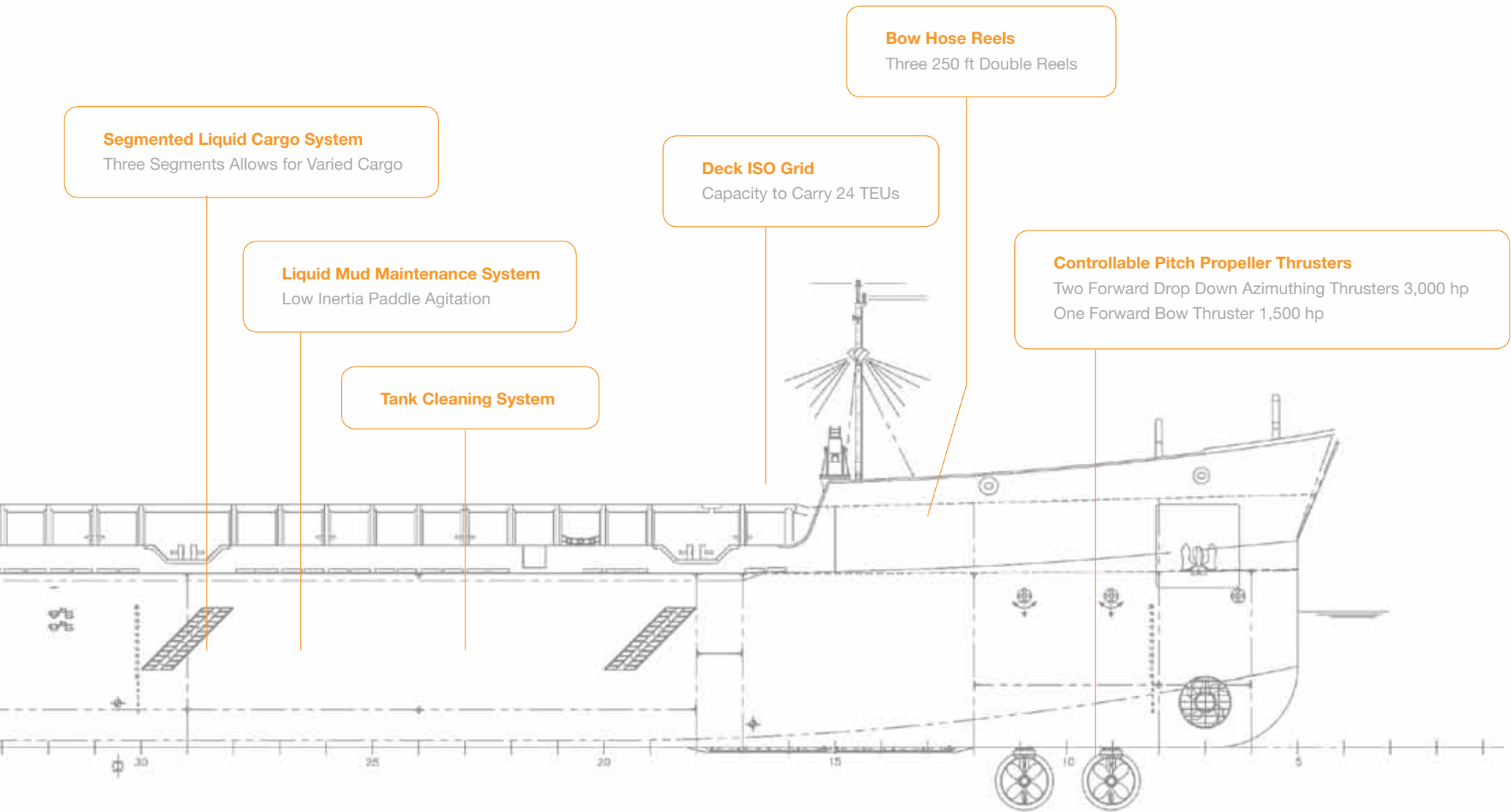
Positive Displacement Progressive Cavity Pumps
Three Pumps: 1,000 Gallons per Minute/each

Controllable Pitch Propeller Thrusters
One Stern Thruster
1,500 hp

Deck Cranes
Three Hydra Pro Nominal 20T

Deck Area: 11,600 ft²
Deck Load Rating: 1,024 lbs/ft²

Main Propulsion
Two Steerable Fixed Pitch Propellers
6,000 hp



Segmented Liquid Cargo System
Three Segments Allows for Varied Cargo

Liquid Mud Maintenance System
Low Inertia Paddle Agitation

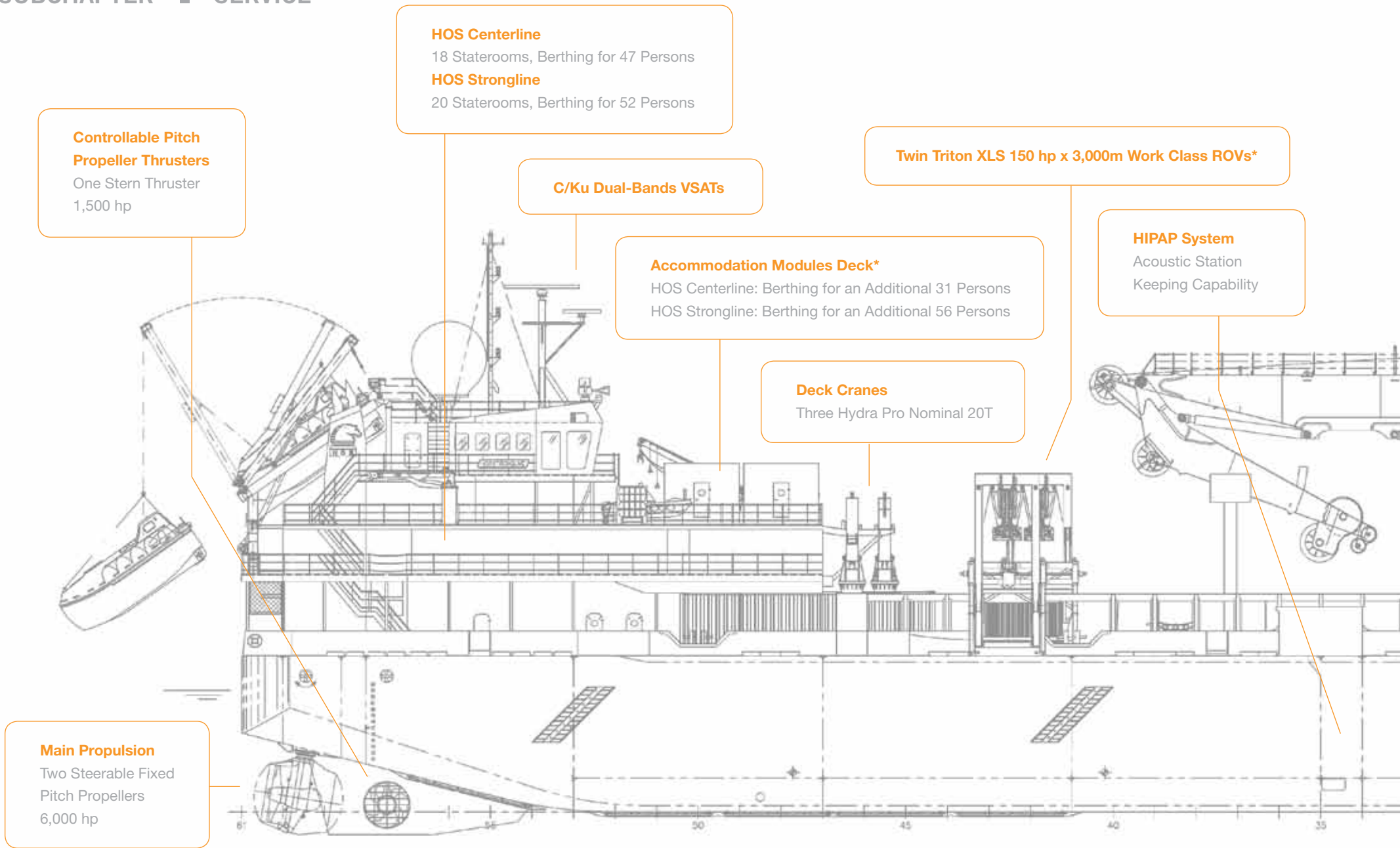
Tank Cleaning System

Deck ISO Grid
Capacity to Carry 24 TEUs

Bow Hose Reels
Three 250 ft Double Reels

Controllable Pitch Propeller Thrusters
Two Forward Drop Down Azimuthing Thrusters 3,000 hp
One Forward Bow Thruster 1,500 hp

USCG SUBCHAPTER SERVICE



Controllable Pitch Propeller Thrusters
One Stern Thruster
1,500 hp

HOS Centerline
18 Staterooms, Berthing for 47 Persons
HOS Strongline
20 Staterooms, Berthing for 52 Persons

C/Ku Dual-Bands VSATs

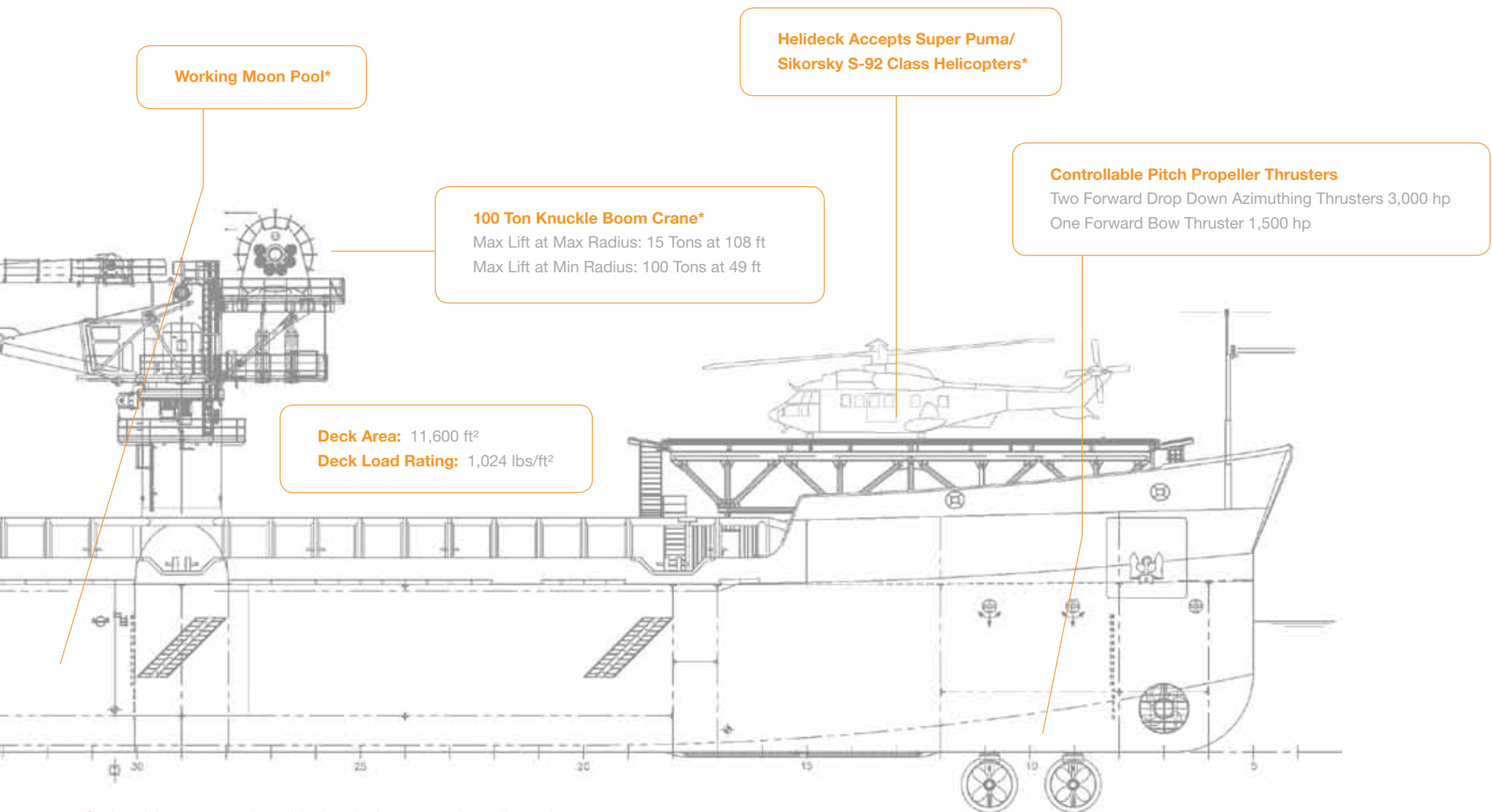
Twin Triton XLS 150 hp x 3,000m Work Class ROVs*

Accommodation Modules Deck*
HOS Centerline: Berthing for an Additional 31 Persons
HOS Strongline: Berthing for an Additional 56 Persons

HIPAP System
Acoustic Station
Keeping Capability

Deck Cranes
Three Hydra Pro Nominal 20T

Main Propulsion
Two Steerable Fixed Pitch Propellers
6,000 hp



*Optional features can be added to the base vessel configuration.

USCG
SUBCHAPTER **D/O** SERVICE

Main Propulsion

Two Steerable Fixed Pitch Propellers
6,000 hp

Deck Cranes

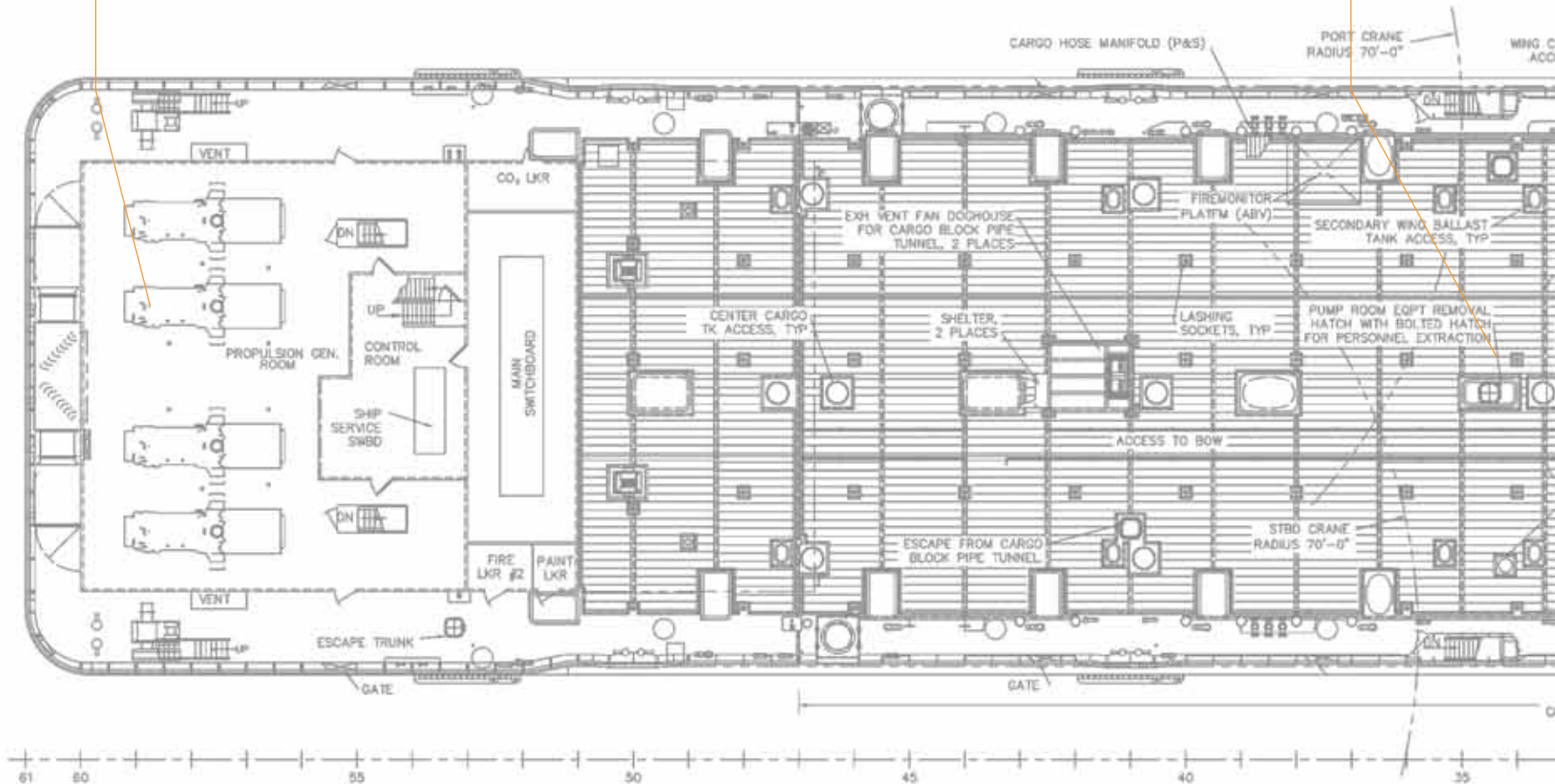
Three Hydra Pro Nominal 20T

Vapor Recovery System

**Free Fall Tanker
Version Lifeboats**

**Controllable Pitch
Propeller Thrusters**

One Stern Thruster
1,500 hp



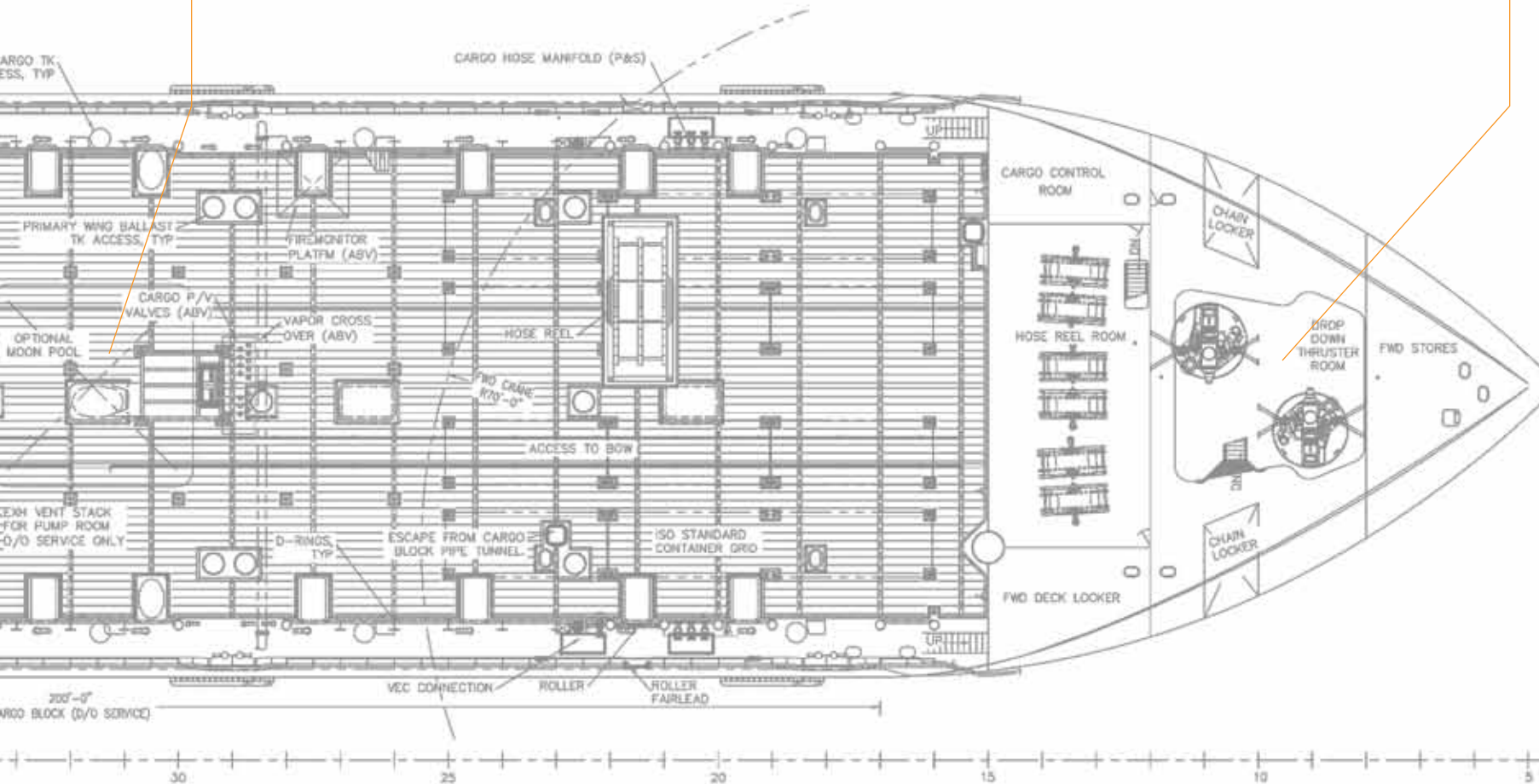
Closed Gauging System

Tank Coating Systems

Suitable for Hydrocarbons
as well as Chemicals

Controllable Pitch Propeller Thrusters

Two Forward Drop Down Azimuthing Thrusters 3,000 hp
One Forward Bow Thruster 1,500 hp



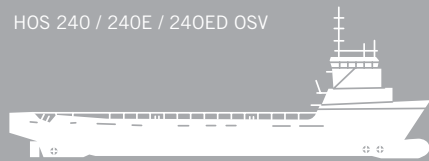




HOS 200 OSV



HOS 240 / 240E / 240ED OSV



HOS 250EDF OSV



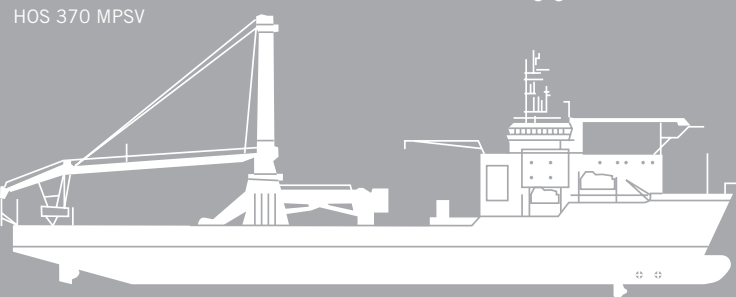
HOS 265 OSV



HOS 285 OSV



HOS 370 MPSV



HOS 430 MPSV



INNOVATION AFLOAT: THE HOS FLEET

Through a series of new building and conversion programs, Hornbeck Offshore has designed and developed a fleet of multi-class vessels. With each ensuing new building program, we've refined the previous blueprint to enhance size, capacity, safety, capability and comfort based on extensive customer input. We equip our new-generation Offshore Service Vessels (OSVs) with the latest technologies, including advanced propulsion and cargo-handling systems and incremental levels of dynamic positioning redundancy. Our new ultra-deepwater Multi-Purpose Support Vessels (MPSVs) are substantially larger and more versatile than our OSVs and are capable of meeting a variety of our customers' needs anywhere in the world.

Opposite: Hornbeck Offshore designed a proprietary computerized vessel simulation program for the HOS 370 MPSVs to train its mariners. This customized simulation model provides "hands-on" training that mirrors the real world operation of the vessel.





HORNBECK OFFSHORE

Service with Energy™

103 Northpark Boulevard, Suite 300

Covington, Louisiana 70433

tel 985.727.2000

fax 985.727.3606

hornbeckoffshore.com