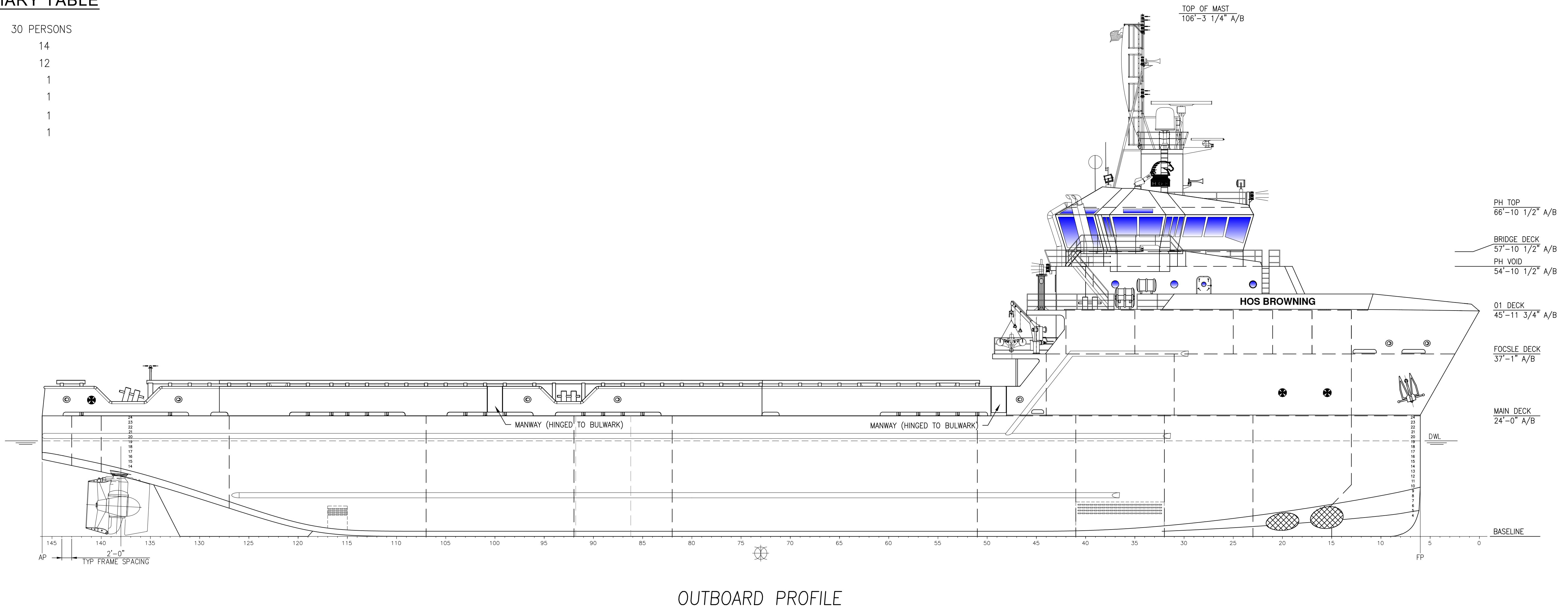


PRINCIPAL PARTICULARS


LOA	292'-0"
LBP-LWL	280'-0"
BEAM	64'-0"
DEPTH	24'-6"
LOADLINE DRAFT	20'-0"
GENERATORS	(4) X 1,825KW @ 1,800 RPM (WATER-COOLED)
TOTAL KILOWATTS	7,300 KW @ 690 VAC
MAIN PROPULSION	(2) X 2,500KW @ 620 VAC @ 1,000 RPM (6,704HP TOTAL) FIXED PITCH VFD Z-DRIVE IN NOZZLES
BOW THRUSTERS	(2) X 1,180 KW @ 620 VAC @ 1,200 RPM (3,164HP TOTAL) FIXED PITCH VFD/REVERSING MOTORS
FIRE MONITORS	(2) 5,284 GPM/ (495KW @ 690 VAC) 665HP/400' REACH - REMOTE CONTROLLED FIRE MONITORS
REGULATORY	SOLAS / LOADLINE, ABS, ✕ DPS-2, (E), ✕ A1, ✕ ACC, ✕ AMS, OSV, UWILD, OSR-C2, FFV-1

292' SUMMARY TABLE

ACCOMMODATIONS	30 PERSONS
STATEROOMS	14
HEADS	12
LOUNGE	1
LAUNDRY AREA	1
GALLEY	1
MESS AREA	1



OUTBOARD PROFILE

1.	TANK & HOLD PLAN	1.003
NO.	TITLE	DRAWING NUMBER
REFERENCES		
HOSMAX 300 / HOS BROWNING		
<small>THIS DRAWING, DESIGN CONCEPT AND SPECIFICATIONS ARE THE PROPERTY OF HORNBECK OFFSHORE SERVICES AND ARE FURNISHED ON A CONFIDENTIAL BASIS WITH AN EXPRESSED UNDERSTANDING THAT THEY WILL NOT BE COPIED IN ANY MANNER USED FOR MANUFACTURE, SOLD, TRANSFERRED, NOR USED TO THE DETRIMENT OF SAID FIRM WITHOUT WRITTEN PERMISSION.</small>		
 HORNBECK OFFSHORE SERVICES		
DRAWN BY:	292'-0" X 64'-0" X 24'-6"	
S. MAUL		
CHECKED BY:	OUTBOARD PROFILE & GENERAL ARRANGEMENT	
M. STANSBURY		
APPROVED BY:	TASK No.	DRAWING No.
J. GUIDRY	7916	1.001
	HULL No. 988	SY: ESG
	SCALE: 3/32"=1'-0"	DATE: 03/03/22
		SHEET 1 OF 4
	REV. 3	

PLS/DATE 3/13/2022 4:45 PM
JSL/WJA

16

15

14

13

12

11

10

9

D

D

C

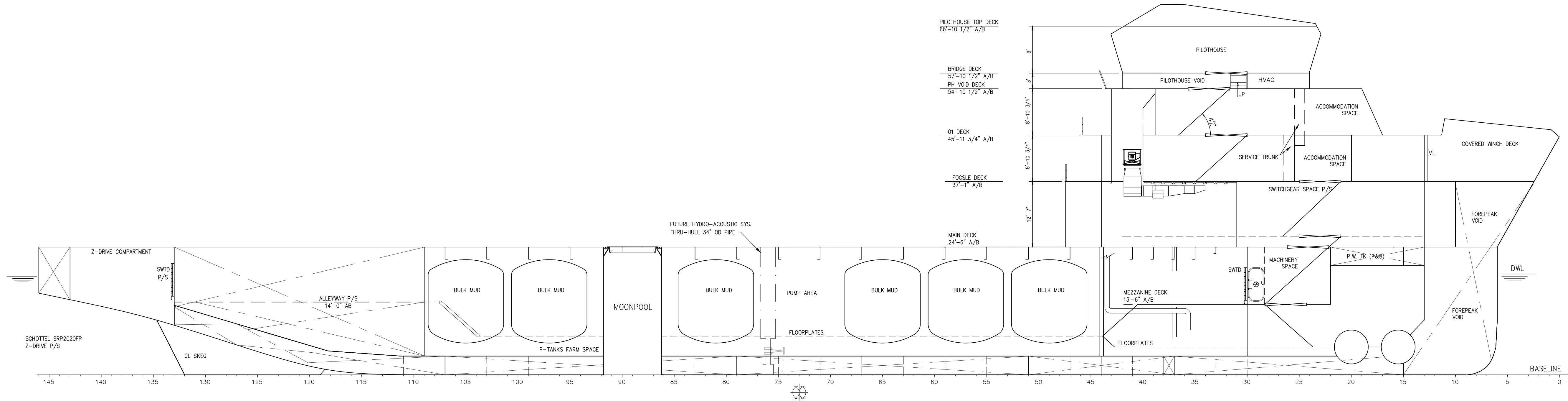
C

B

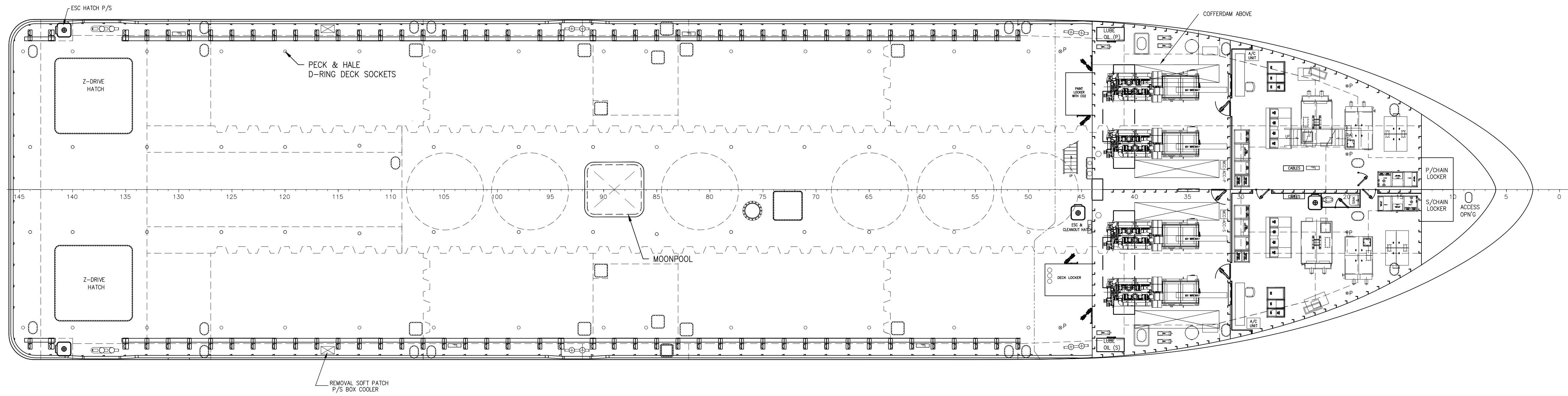
B

A

A



INBOARD PROFILE



MAIN DECK
12 BERTHS (PAC)

THIS DRAWING, DESIGN CONCEPT AND SPECIFICATIONS ARE THE PROPERTY OF HORNBECK OFFSHORE SERVICES AND ARE FURNISHED ON A CONFIDENTIAL BASIS WITH AN EXPRESSED UNDERSTANDING THAT THEY WILL NOT BE COPIED IN ANY MANNER USED FOR MANUFACTURE, SALE, TRANSFER, NOR USED TO THE DETRIMENT OF SAID FIRM WITHOUT WRITTEN PERMISSION.

HORNBECK OFFSHORE SERVICES

OUTBOARD PROFILE & GENERAL ARRANGEMENT			SIZE D
TASK No. 7916	DRAWING No. 1.001	SCALE: 3/32"=1'-0"	REV. 3
HULL No. 988	SY: ESG	DATE: 03/03/22	SHEET 2 OF 4

16

15

14

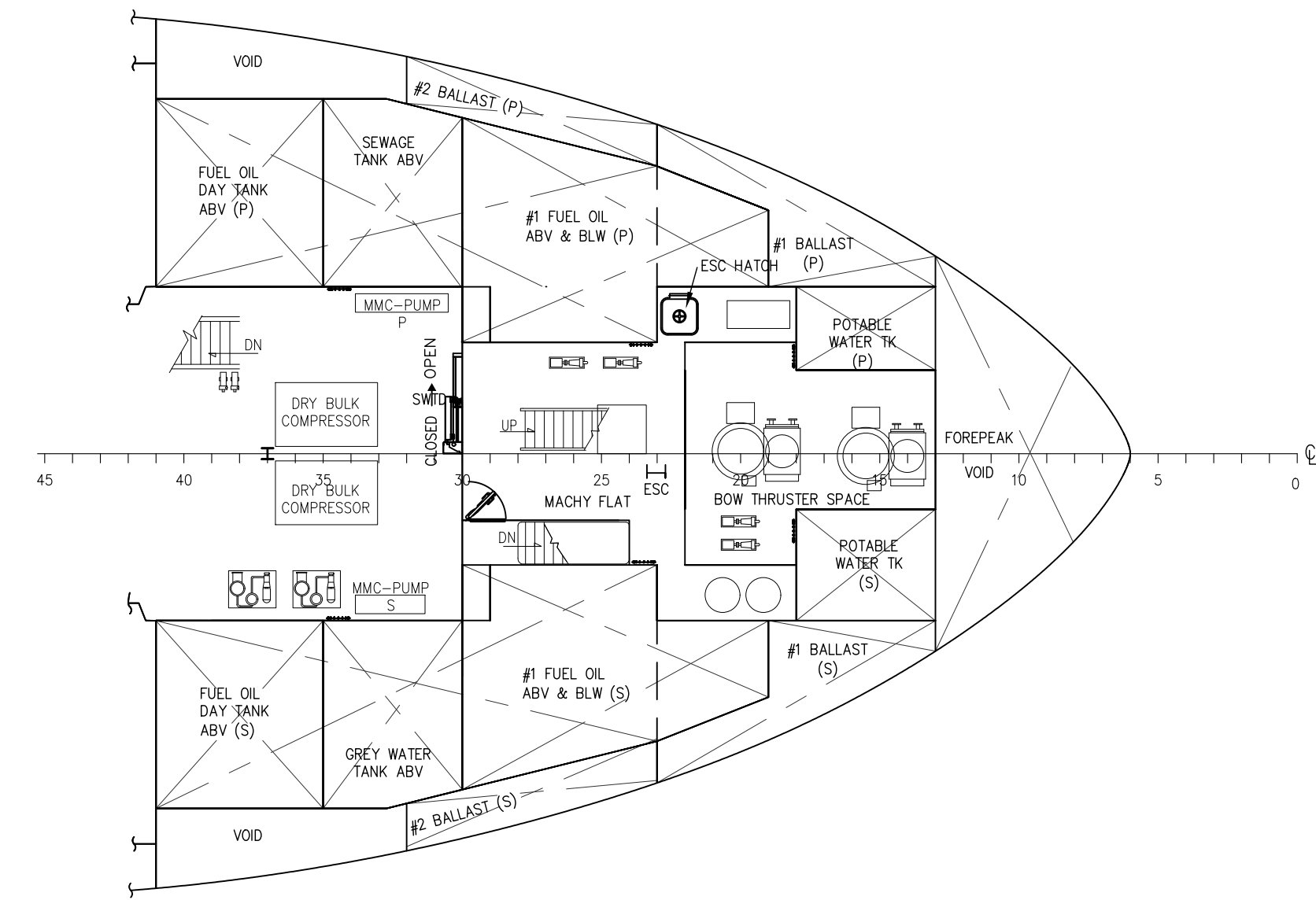
13

12

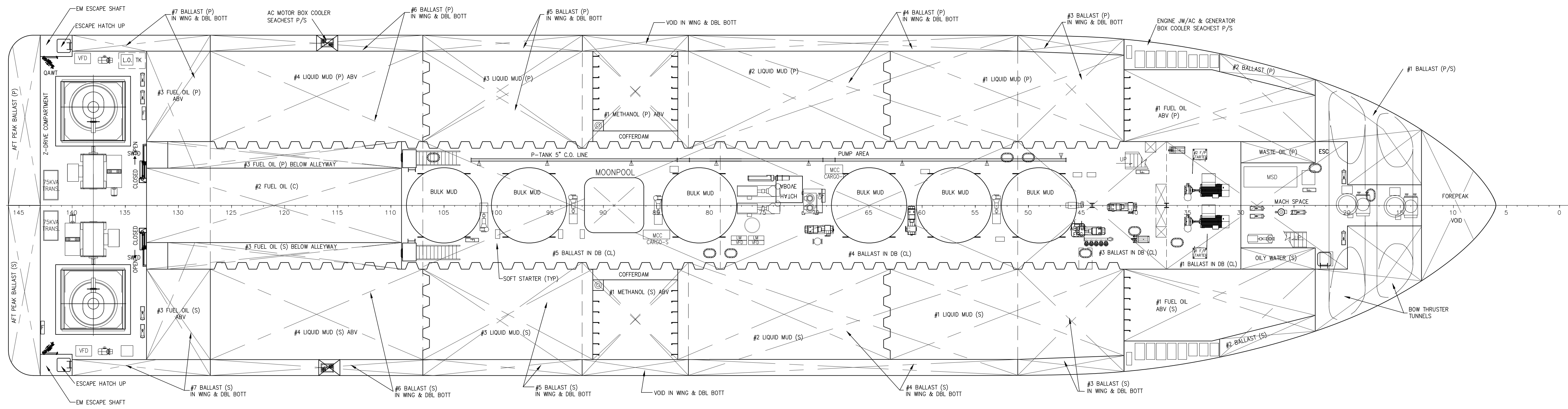
11

10

9



MEZZANINE FLAT

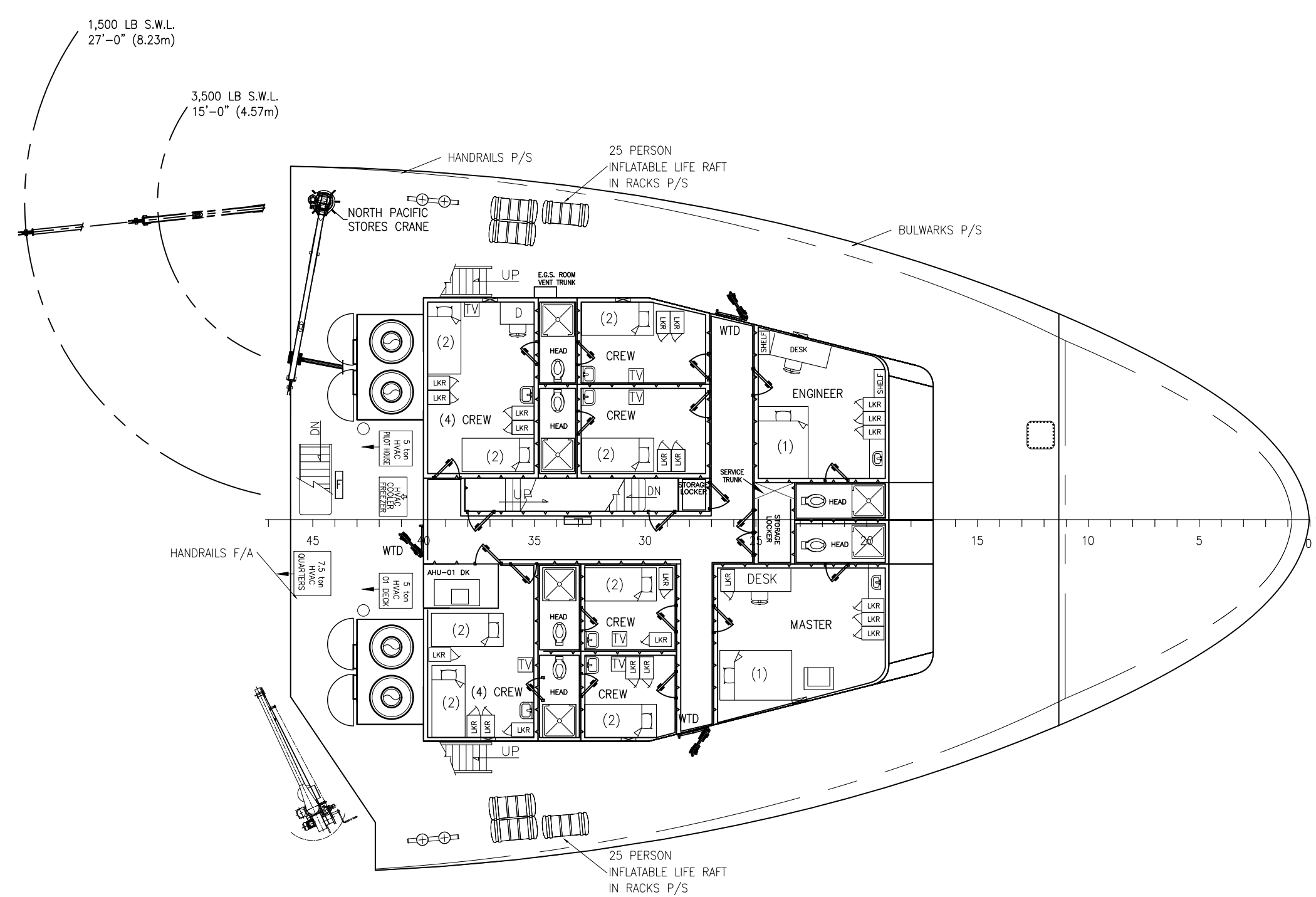


HOLD PLAN

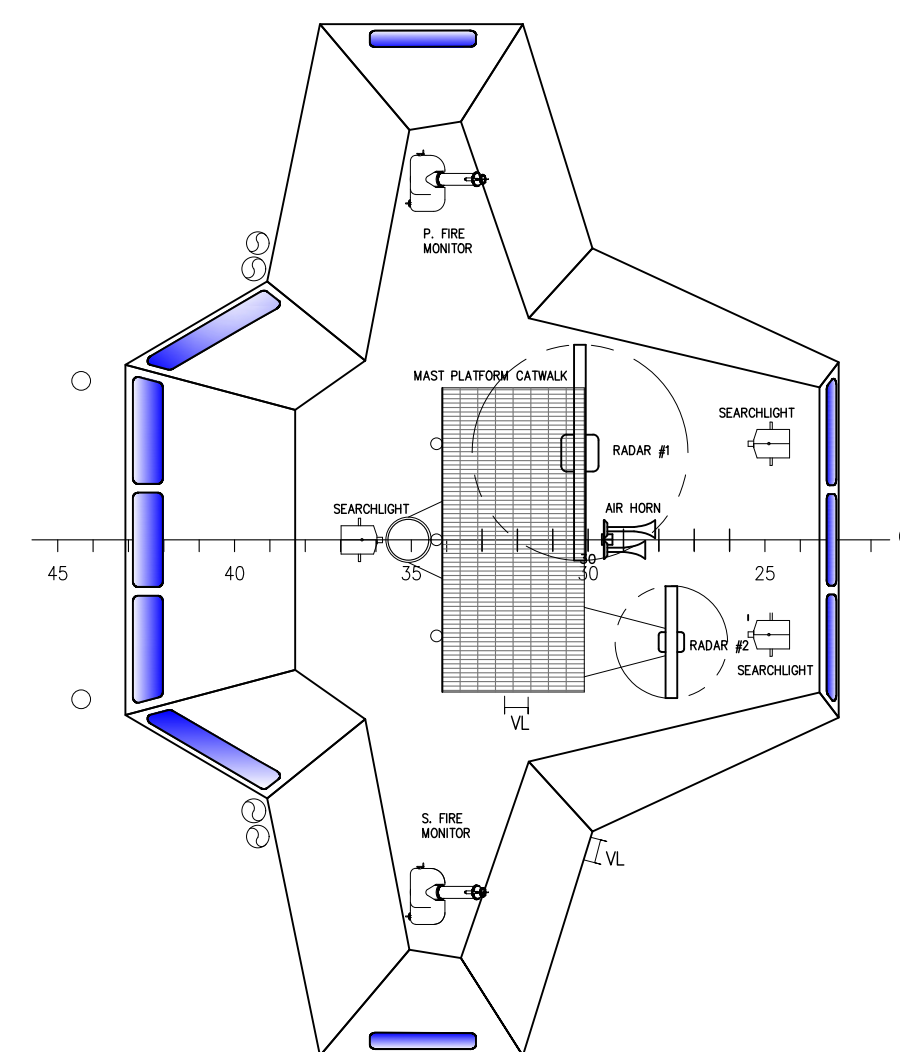
THIS DRAWING, DESIGN CONCEPT AND SPECIFICATIONS ARE THE PROPERTY OF HORNBECK OFFSHORE SERVICES AND ARE FURNISHED ON A CONFIDENTIAL BASIS WITH AN EXPRESSED UNDERSTANDING THAT THEY WILL NOT BE COPIED IN ANY MANNER USED FOR MANUFACTURE, SALE, TRANSFER, NOR USED TO THE DETRIMENT OF SAID FIRM WITHOUT WRITTEN PERMISSION. HOS

HORNBECK OFFSHORE SERVICES

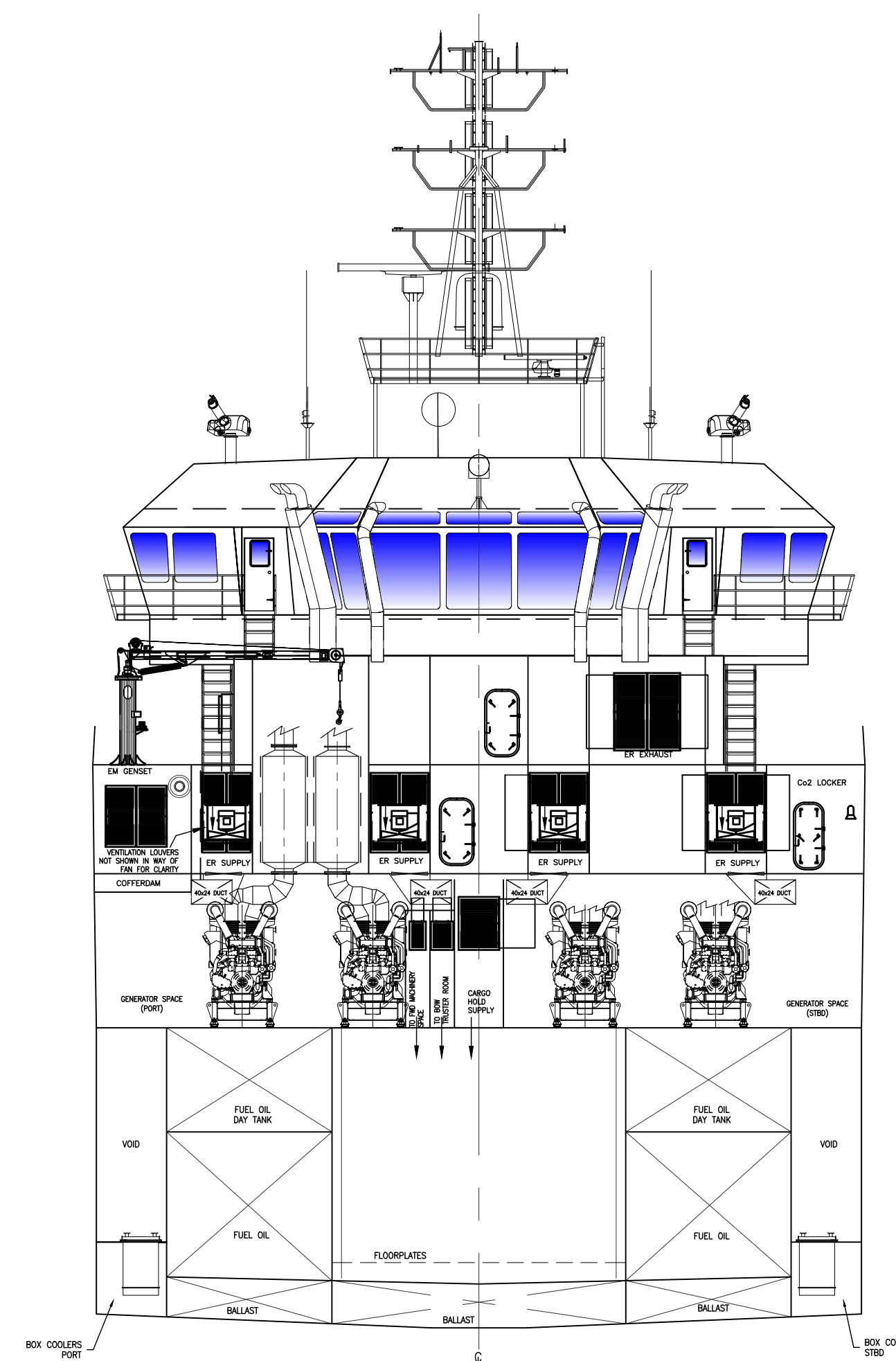
OUTBOARD PROFILE & GENERAL ARRANGEMENT			SIZE D
TASK No. 7916	DRAWING No. 1.001	SCALE: 3/32"=1'-0"	REV. 3
HULL No. 988	SY: ESG	DATE: 03/03/22	SHEET 3 OF 4



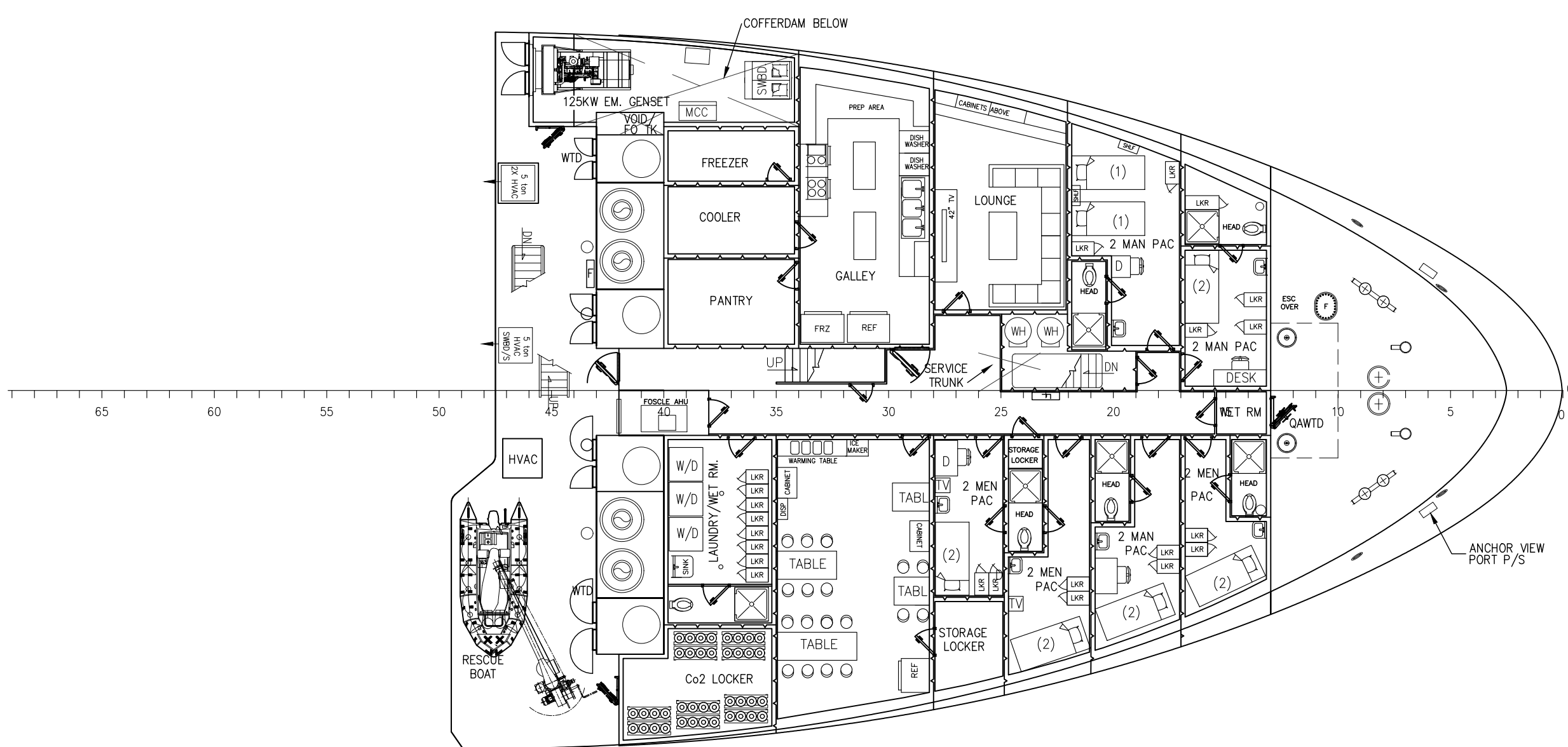
01 DECK
16 BERTHS



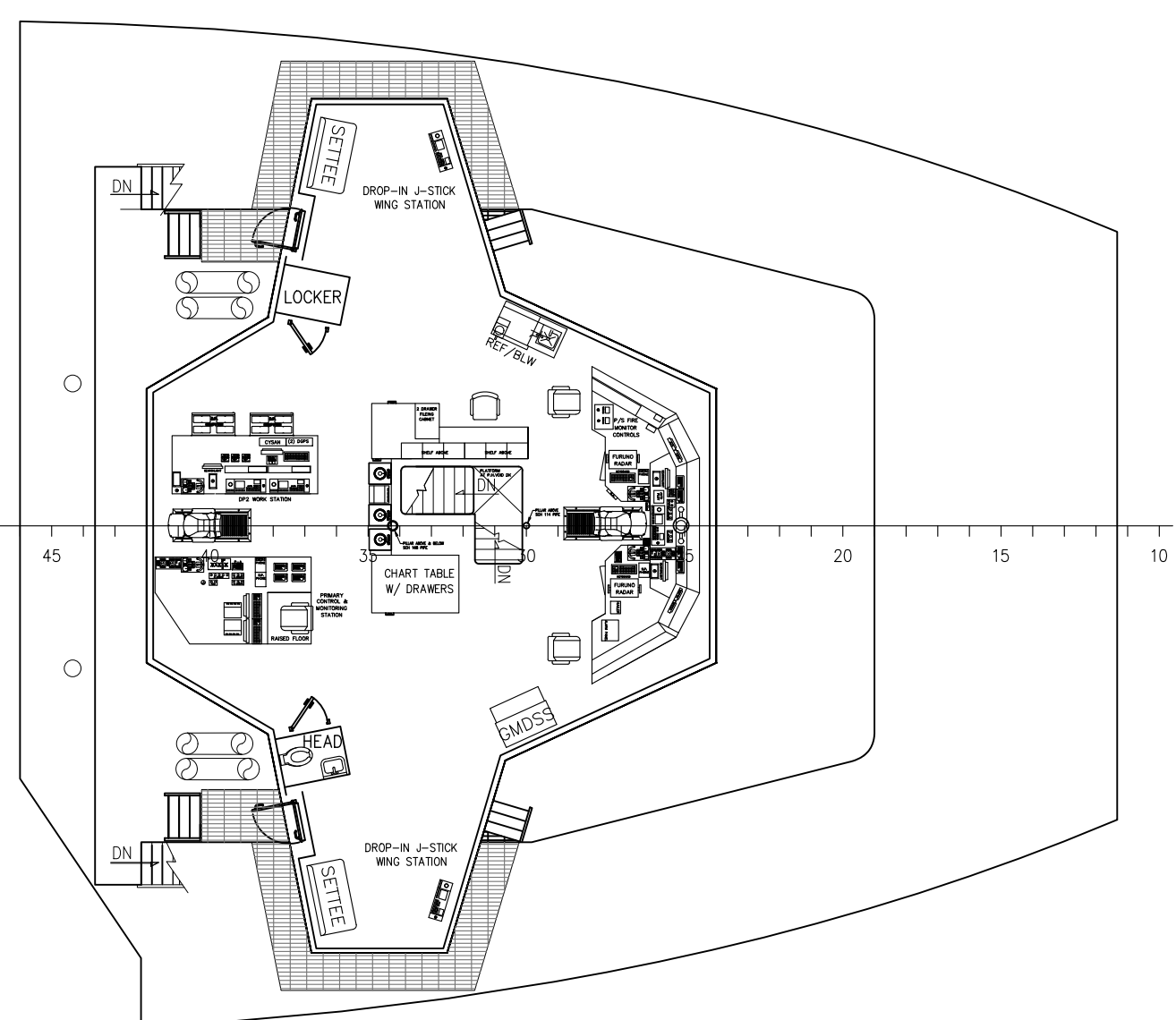
PH TOP DECK



SECTION ABOUT FR14
LKG WD



FOCSE DECK
12 BERTHS (PAC)



BRIDGE DECK

	THIS DRAWING, DESIGN CONCEPT AND SPECIFICATIONS ARE THE PROPERTY OF HORNBECK OFFSHORE SERVICES AND ARE FURNISHED ON A CONFIDENTIAL BASIS WITH AN EXPRESSED UNDERSTANDING THAT THEY WILL NOT BE COPIED IN ANY MANNER USED FOR MANUFACTURE, SALE, TRANSFERRED, NOR USED TO THE DETRIMENT OF SAID FIRM WITHOUT WRITTEN PERMISSION.			8088
	HORNBECK OFFSHORE SERVICES			REV.
	TASK No. 7916	DRAWING No. 1,001	SCALE: 3/32"=1'-0"	3
	HULL No. 988	SY: ESG	DATE: 03/03/22	
			OUTBOARD PROFILE & GENERAL ARRANGEMENT	SIZE D
			SHEET 4 OF 4	