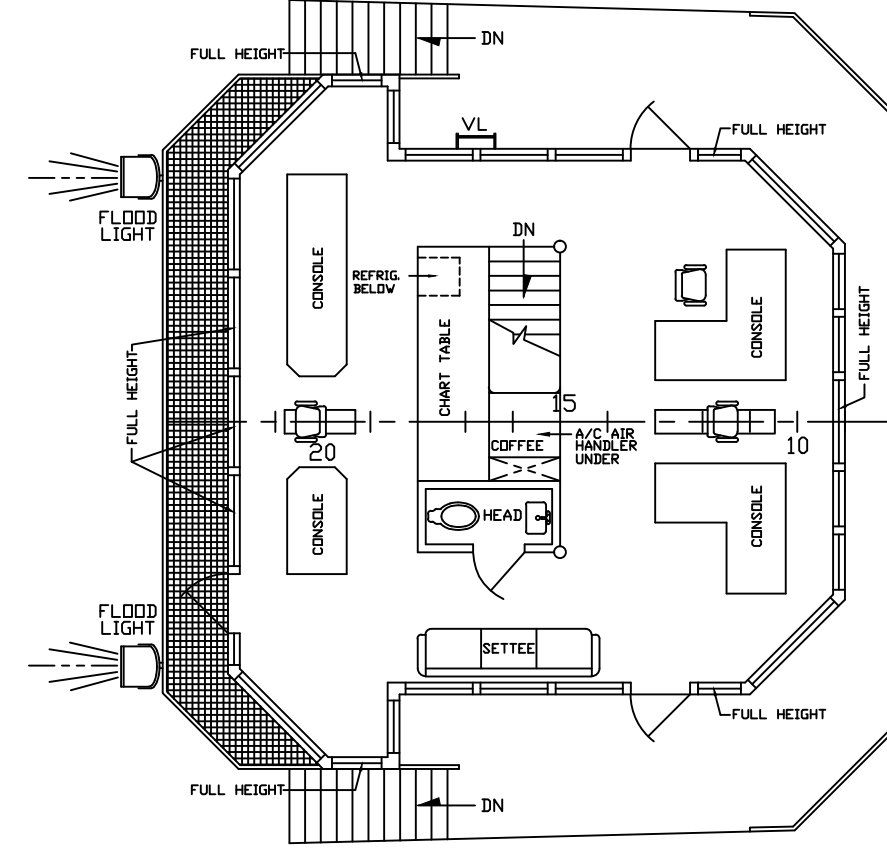
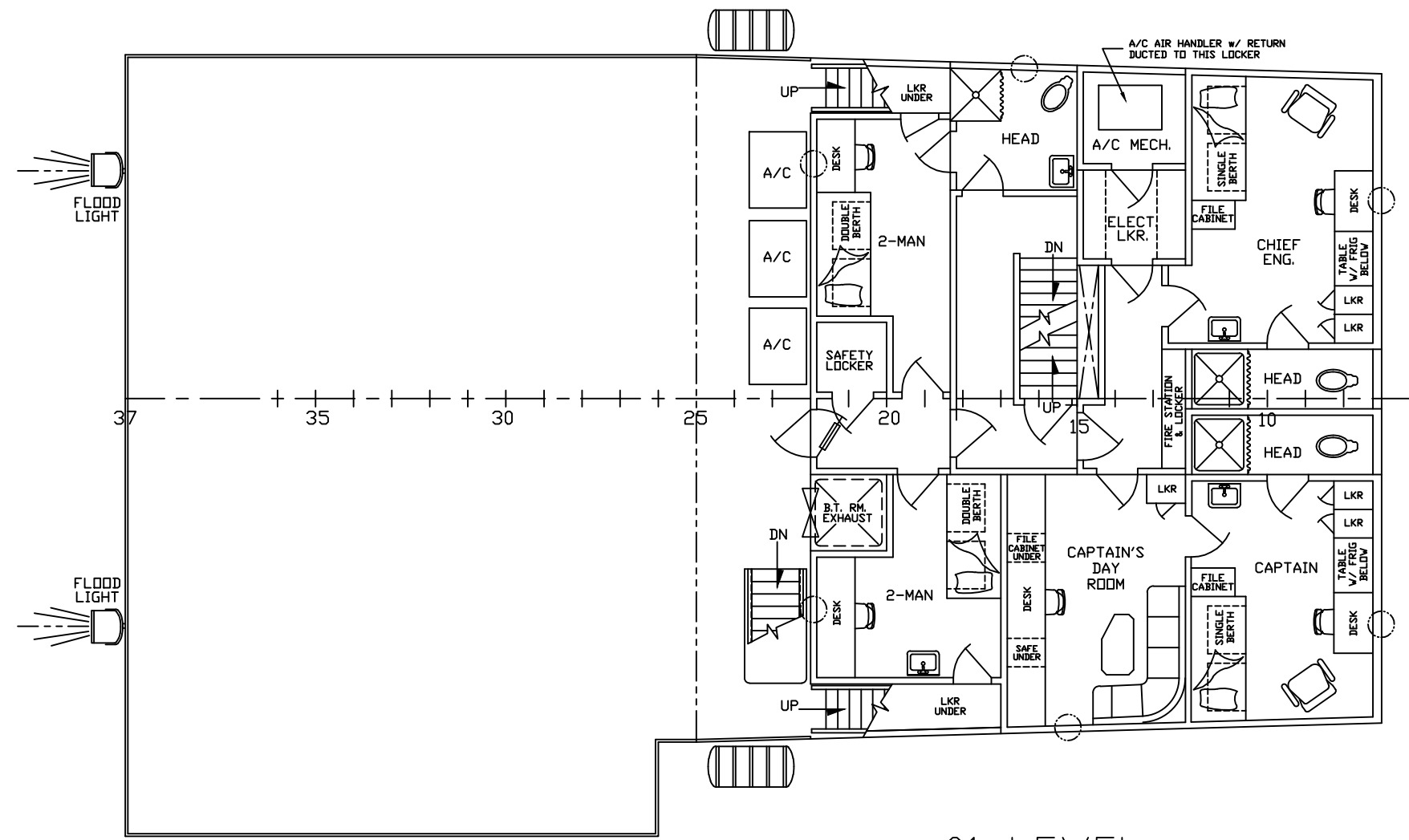


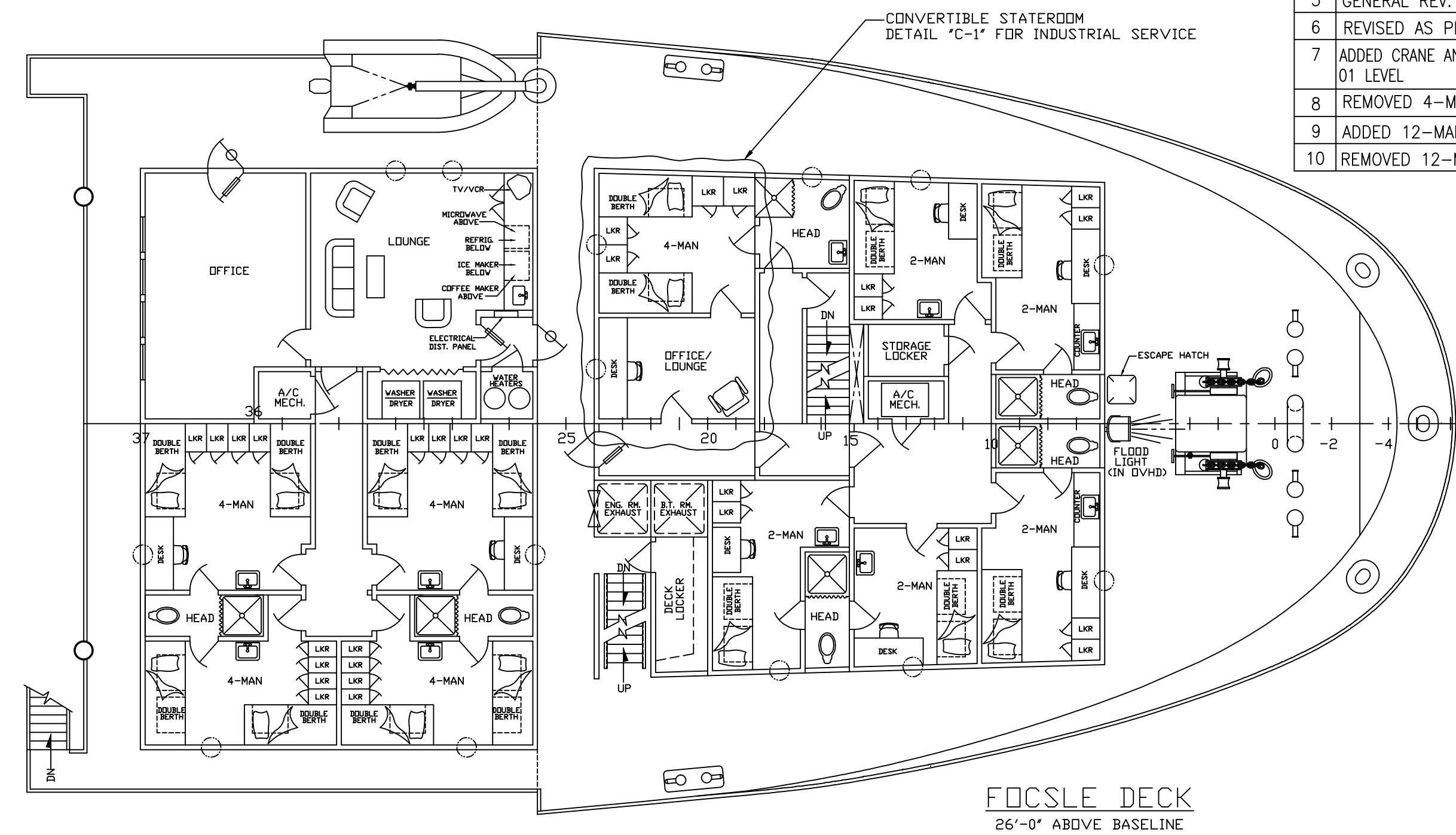
REVISIONS		
REV	DESCRIPTION	DATE
3	REVISED AS PER OWNER ADDED NEW QUARTERS & REV. BULWARK & CHANGED ARRGT ON MN DK	1-15-01
4	ADDED HOSPITAL & TUGGER WINCH	1-17-01
5	GENERAL REV. FOC. DECK WALLS	1-19-01
6	REVISED AS PER OWNERS COMMENTS	2-1-01
7	ADDED CRANE AND 4-MAN ACCOM TO 01 LEVEL	10-18-10
8	REMOVED 4-MAN ACCOM UNIT	02-01-11
9	ADDED 12-MAN ACCOM TO 01 LEVEL	03-10-11
10	REMOVED 12-MAN ACCOM ON 01 LEVEL	08-12-13



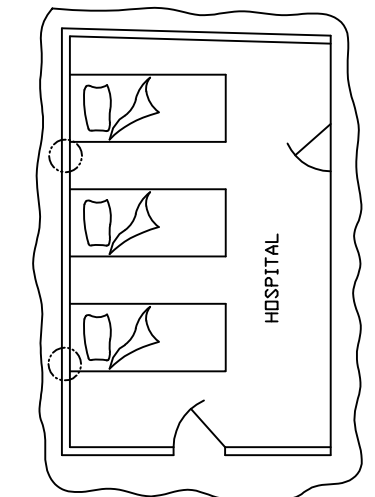
**BRIDGE**  
45'-0" ABOVE BASELINE



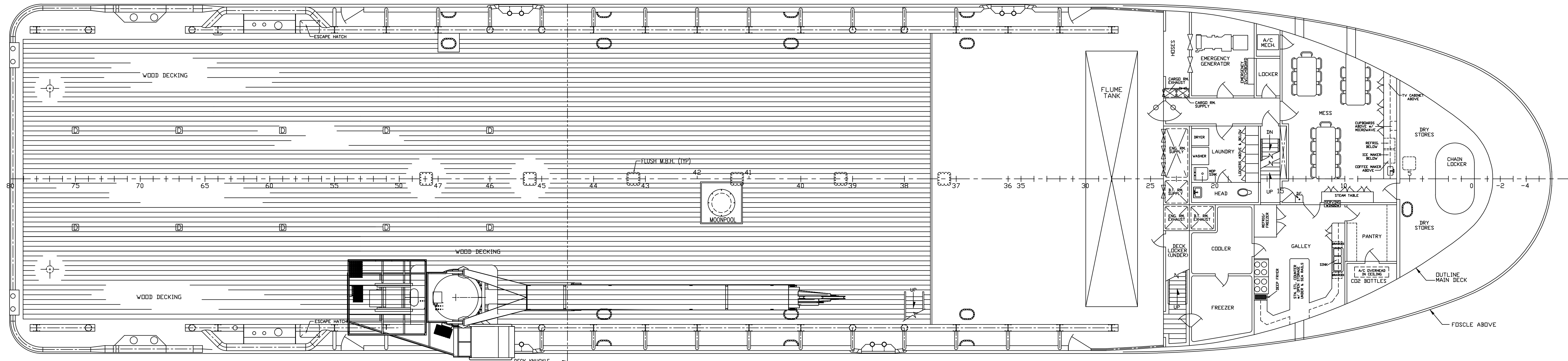
**01 LEVEL**  
35'-6" ABOVE BASELINE



**FOCSE DECK**  
26'-0" ABOVE BASELINE



**DETAIL 'C-1'**  
HOSPITAL FOR '1' SERVICE



**MAIN DECK**  
16'-0" ABOVE BASELINE

THIS DRAWING, DESIGN CONCEPT AND SPECIFICATIONS ARE THE PROPERTY OF HORNBECK OFFSHORE SERVICES AND ARE FURNISHED ON A CONFIDENTIAL BASIS WITH AN EXPRESSED UNDERSTANDING THAT THEY WILL NOT BE COPIED IN ANY MANNER USED FOR MANUFACTURE, SOLD, TRANSFERRED, NOR USED TO THE DETRIMENT OF SAID FIRM WITHOUT WRITTEN PERMISSION. 1108 ©

**HORNBECK OFFSHORE SERVICES**

DRAWN BY: JONATHAN LEJEUNE 240'-0" X 54'-0" X 17'-0" OSV

CH'KD. BY: MIKE JANNISE **GENERAL ARRANGEMENTS**

APP'D. BY: SCALE: 1/8" = 1'-0" DATE: 02-27-12 REV. 10

APP'D. BY: DRAWING # 1.001A SHEET 1 OF 1